



TANZANIA INSURANCE REGULATORY AUTHORITY

**APPLICATION PROGRAMING INTERFACE TECHNICAL SPECIFICATION
(API v 1.0)**

October, 2020

Contents

1. PREREQUISITES	1
1.1 Network Connection to TIRAMIS	1
1.2 Insurer and Third Parties Systems	1
1.3 Digital Certificates	1
1.4 Message Exchange	1
1.5 Message Encoding	1
1.6 Special Characters	1
2. MESSAGE STRUCTURE	2
2.1 Request Messages	2
2.1.1 Request HTTP header shall contain the following parameters when sending request to TIRAMIS.	2
2.1.2 Request payload shall change based on service encountered. However, the general structure will be as shown below:	2
2.2 Response Message	2
2.2.1 Response HTTP header shall contain the following parameters when responding to TIRAMIS.	2
2.2.2 Response payload shall change based on service encountered. However, the general structure will be as shown below:	2
3. DATA SUBMISSION PROCESS FLOW	3
4. NON LIFE INSURANCE DATA SUBMISSION OTHER THAN MOTOR INSURANCE	4
4.1 Cover Note or Endorsement Submission Data Request – CoverNoteRefReq	4
4.2 Cover note or Endorsement data submission Request Acknowledgement – CoverNoteRefReqAck	12
4.3 Cover Note or Endorsement Data Submission Final Response – CoverNoteRefRes	13
4.4 Cover Note or Endorsement data submission Final Response Acknowledgement - CoverNoteRefResAck	14
5. MOTOR INSURANCES COVER NOTE AND ENDORSEMENT DATA SUBMISSION	15
5.1 Motor Insurance Cover Note or Endorsement Submission Data Request - MotorCoverNoteRefReq	15
5.2 Cover Note or Endorsement data submission Request Acknowledgement- MotorCoverNoteRefReqAck	25
5.3 Cover Note or Endorsement Data Submission Final Response – MotorCoverNoteRefRes	25

5.4	Cover note or Endorsement data submission Final Response Acknowledgement - MotorCoverNoteRefResAck	26
6.	REINSURANCE DATA SUBMISSION	27
6.1	Reinsurance Data Submission Request - ReinsuranceReq	27
6.2	Reinsurance Data Submission Request Acknowledgement – ReinsuranceReqAck	30
6.3	Reinsurance Data Submission Request Final Response – ReinsuranceRes 30	
6.4	Reinsurance Data Submission Request Final Response Acknowledgement - ReinsuranceResAck	31
7.	POLICY DATA SUBMISSION	31
7.1	Policy Data Submission Request - PolicyReq	31
7.2	Policy Data Submission Request Acknowledgement – PolicyReqAck	33
7.3	Policy Data Submission Request Final Response – PolicyRes	33
7.4	Policy Data Submission Request Final Response Acknowledgement - PolicyResAck	34
8.	COVER NOTE VERIFICATION	36
8.1	Covernote Verification Request - CoverNoteVerificationReq	36
8.2	Covernote Verification Response – CoverNoteVerificationRes	37
9.	NATIONAL IDENTIFICATION NUMBER (NIN) VERIFICATION.....	46
9.1	NIN verification Submission Request - NINVerificationReq	46
9.2	NIN verification response - NINVerificationRes	47
10.	COMPANY VERIFICATION.....	48
10.1	Company verification Submission Request - CompanyVerificationReq	48
10.2	Company verification response - CompanyVerificationRes	49
11.	MOTOR VERIFICATION	50
11.1	Motor verification Submission Request - MotorVerificationReq	50
11.2	Motor verification response - MotorVerificationRes	51
12.	CLAIM NOTIFICATION SUBMISSION.....	52
12.1	Claim Notification Submission Request - ClaimNotificationRefReq	52
12.2	Claim Notification Data Submission Request Acknowledgement – ClaimNotificationRefReqAck	54
12.3	Claim Notification Data Submission Request Final Response – ClaimNotificationRefRes	55
12.4	Claim Notification Data Submission Request Final Response Acknowledgement - ClaimNotificationRefResAck	55

13.	CLAIM INTIMATION SUBMISSION	56
13.1	Claim Intimation Submission Request – ClaimIntimationReq	56
13.2	Claim Intimation Data Submission Request Acknowledgement – ClaimIntimationReqAck	59
13.3	Claim Intimation Data Submission Request Final Response – ClaimIntimationRes	60
13.4	Claim Intimation Data Submission Request Final Response Acknowledgement - ClaimIntimationResAck	60
14.	CLAIM ASSESSMENT DATA SUBMISSION	61
14.1	Claim Assessment Submission Request – ClaimAssessmentReq	61
14.2	Claim Assessment Data Submission Request Acknowledgement – ClaimAssessmentReqAck	64
14.3	Claim Assessment Data Submission Request Final Response – ClaimAssessmentRes	64
14.4	Claim Intimation Data Submission Request Final Response Acknowledgement - ClaimAssessmentResAck	65
15.	DISCHARGE VOUCHER DATA SUBMISSION	65
15.1	Discharge Voucher Submission Request – DischargeVoucherReq	65
15.2	Discharge Voucher Data Submission Request Acknowledgement – DischargeVoucherReqAck	69
15.3	Discharge voucher Data Submission Request Final Response – DischargeVoucherRes	69
15.4	Discharge voucher Data Submission Request Final Response Acknowledgement - DischargeVoucherResAck	70
16.	CLAIM PAYMENT DATA SUBMISSION	70
16.1	Claim Payment Submission Request – ClaimPaymentReq	70
16.2	Claim Payment Data Submission Request Acknowledgement – ClaimPaymentReqAck	73
16.3	Claim Payment Data Submission Request Final Response – ClaimPaymentRes	74
16.4	Claim Payment Data Submission Request Final Response Acknowledgement - ClaimPaymentResAck	74
17.	CLAIM REJECTION DATA SUBMISSION	75
17.1	Claim Rejection Submission Request – ClaimRejectionReq	75
17.2	Claim Rejection Data Submission Request Acknowledgement – ClaimRejectionReqAck	77
17.3	Claim Rejection Data Submission Request Final Response – ClaimRejectionRes	78

17.4 Claim Rejection Data Submission Request Final Response
Acknowledgement - ***ClaimRejectionResAck***.....79

Document Description

Document Name	Application Programming Interface Technical Specification
Owner	Tanzania Insurance Regulatory Authority
Document Type	TIRAMIS – Insurer and Authorized Third Parties

Document version Control

Version	Date	Change Description
1.0	07-10-2020	Baseline initial version created.

1. PREREQUISITES

1.1 Network Connection to TIRAMIS

Integrating partner is supposed to establish secure Virtual Private Network (VPN) connection to Tanzania Insurance Regulatory Authority Management Information System (TIRAMIS) datacenter.

1.2 Insurer and Third Parties Systems

Integrating institution must have a working or a complete developed system that is ready for integration with TIRAMIS. The system shall undergo several tests with TIRAMIS; and once passed, then shall be allowed to migrate to TIRAMIS production environment.

1.3 Digital Certificates

Integrating institution must share her public certificate(s) and obtain TIRAMIS public certificate(s) to be used in verification of all messages exchanged between their system and TIRAMIS. For the algorithm and format, please refer to Digital Signature Security section of this document. Testing certificates may be provided by TIRAMIS. These shall ONLY be used during testing sessions.

1.4 Message Exchange

- a. The message exchange shall use POST method of the HTTP protocol transport protocol with payload being an XML
- b. The expected HTTP method is always POST.
- c. Endpoints shall be communicated during integration process. There shall be endpoints for testing environment and others for production environment.
- d. The integrating institute may wish to use HTTPS protocol but will be required to share its SSL public certificate and all end points shall have full qualified registered domain(s)

1.5 Message Encoding

Supported data exchange encoding are utf-8 and utf-16

1.6 Special Characters

Xml body content should ensure all the special characters are escaped.

Character	Description	Escaped by
&	Ampersand	&
<	Less-than	<
>	Greater-than	>
"	Quotes	"
'	Apostrophe	'

2. MESSAGE STRUCTURE

2.1 Request Messages

All Request to TIRAMIS shall contain two (2) parts i.e HTTP Header and Payload.

2.1.1 Request HTTP header shall contain the following parameters when sending request to TIRAMIS.

Parameter	Values/Description
Content-Type	Application/xml
ClientCode	Shall be given during the integration
ClientKey	Shall be given during the integration

2.1.2 Request payload shall change based on service encountered. However, the general structure will be as shown below:

```
<TiraMsg>  
  <Content></Content>  
  <MsgSignature></MsgSignature>  
</TiraMsg>
```

2.2 Response Message

All Response to TIRAMIS shall contain two (2) parts i.e HTTP Header and Payload.

2.2.1 Response HTTP header shall contain the following parameters when responding to TIRAMIS.

Parameter	Values/Description
Content-Type	Application/xml

2.2.2 Response payload shall change based on service encountered. However, the general structure will be as shown below:

```
<TiraMsg>  
  <Content></Content>  
  <MsgSignature></MsgSignature>  
</TiraMsg>
```

3. DATA SUBMISSION PROCESS FLOW

- a. Insurer Information System submits Cover Note data or Endorsement data as per **respective** xml format until TIRAMIS system acknowledge receiving the request
- b. TIRAMIS system must acknowledge as per **respective xml** format receiving request from Insurer System before doing any internal processing
- c. TIRAMIS System must send final response via callbackurl provided in corresponding **respective** message as per **respective xml** format until Insurer system acknowledge receiving the final response
- d. Insurer Information System must acknowledge as per **respective xml** format receiving response from TIRAMIS System before doing any internal processing

NOTE:

In case Insurer Information System does not receive acknowledgement from TIRAMIS System in step b. above, it must keep retrying until acknowledgement is received. Unless there is a connectivity problem between the two systems or any other system problem hindering communication.

In case TIRAMIS System does not receive acknowledgement from Insurer Information System in step d. above, it must keep retrying until acknowledgement is received. Unless there is a connectivity problem between the two systems or any other system problem.

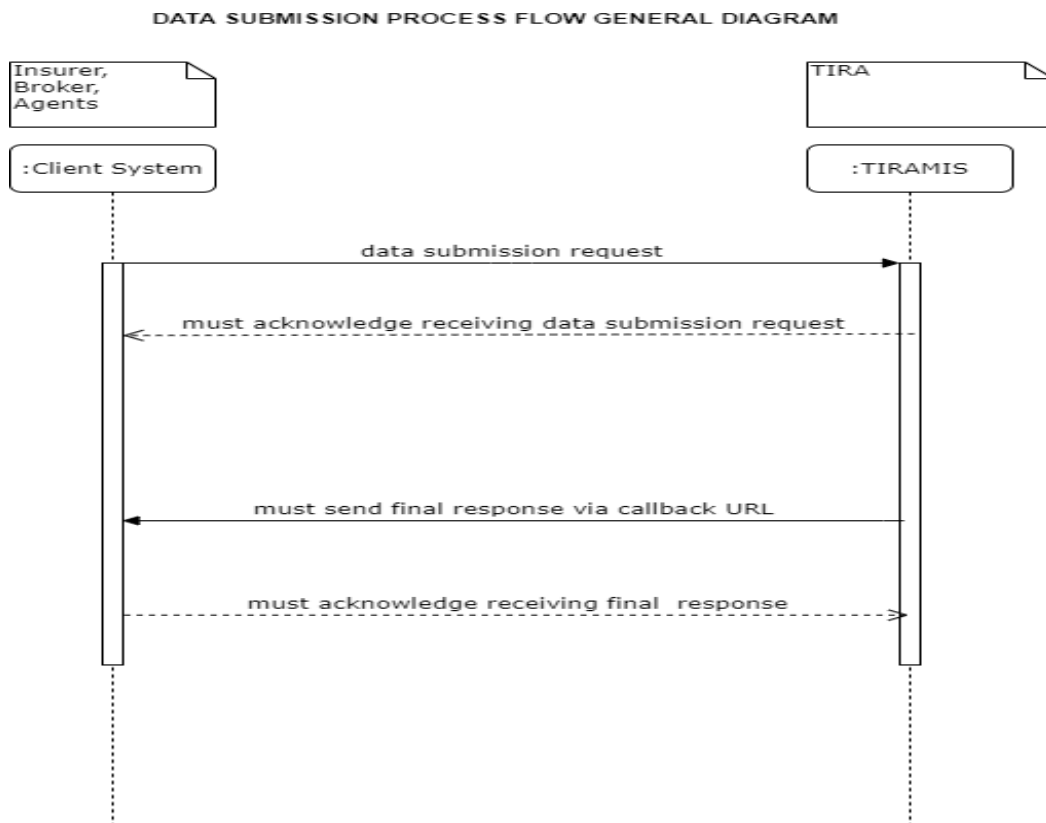


Figure 1: Data Submission Flow diagram

4. NON LIFE INSURANCE DATA SUBMISSION OTHER THAN MOTOR INSURANCE

4.1 Cover Note or Endorsement Submission Data Request – *CoverNoteRefReq*

```
<TiraMsg>
  <CoverNoteRefReq>
    <CoverNoteHdr>
      <RequestId>NIC22424232355</RequestId>
      <CompanyCode>IC0003</CompanyCode>
      <SystemCode>SYS0003</SystemCode>
    <CallBackUrl>http://nic.co.tz/api/CoverNoteref/response</CallBackUrl>
      <InsurerCompanyCode>IC001</InsurerCompanyCode>
      <TranCompanyCode>IC001</TranCompanyCode>
      <CoverNoteType>1</CoverNoteType>
    </CoverNoteHdr>
    <CoverNoteDtl>
      <CoverNoteNumber>NIC00004</CoverNoteNumber>
    <PrevCoverNoteReferenceNumber>32525252</PrevCoverNoteReferenceNumber>
      <SalePointCode>SP001</SalePointCode>
      <CoverNoteStartDate>2020-09-15T13:55:22</CoverNoteStartDate>
      <CoverNoteEndDate>2021-07-30T23:59:59</CoverNoteEndDate>
      <CoverNoteDesc>CoverNote for Residential House Insurance at Dar es
Salaam Magomeni</CoverNoteDesc>
      <OperativeClause>Fire and Allied Perils</OperativeClause>
      <PaymentMode>1</PaymentMode>
      <CurrencyCode>USD</CurrencyCode>
      <ExchangeRate>2000.00</ExchangeRate>
      <TotalPremiumExcludingTax>3000.00</TotalPremiumExcludingTax>
      <TotalPremiumIncludingTax>3380.00</TotalPremiumIncludingTax>
      <CommisionPaid>0.00</CommisionPaid>
      <CommisionRate>0.00</CommisionRate>
      <OfficerName>John Doe</OfficerName>
      <OfficerTitle>Underwriter</OfficerTitle>
      <ProductCode>CP20100000</ProductCode>
      <RisksCovered>
        <RiskCovered>
          <RiskCode>RK20100001</RiskCode>
          <SumInsured>5000</SumInsured>
          <SumInsuredEquivalent>5000</SumInsuredEquivalent>
          <PremiumRate>0.20</PremiumRate>
          <PremiumBeforeDiscount>1000.00</PremiumBeforeDiscount>
          <PremiumDiscount>0.00</PremiumDiscount>
          <DiscountType>1</DiscountType>
          <PremiumAfterDiscount>1000.00</PremiumAfterDiscount>
        <PremiumExcludingTaxEquivalent>1000.00</PremiumExcludingTaxEquivalent>
          <PremiumIncludingTax>1190.00</PremiumIncludingTax>
          <TaxesCharged>
            <TaxCharged>
              <TaxCode>VAT</TaxCode>
              <TaxRate>0.18</TaxRate>
              <TaxAmount>180</TaxAmount>
            </TaxCharged>
            <TaxCharged>
              <TaxCode>WITHHOLDING</TaxCode>
              <TaxRate>0.01</TaxRate>
              <TaxAmount>10</TaxAmount>
            </TaxCharged>
          </TaxesCharged>
        </RiskCovered>
        <RiskCovered>
          <RiskCode>RK20100002</RiskCode>
```

```

        <SumInsured>5000</SumInsured>
        <SumInsuredEquivalent>5000</SumInsuredEquivalent>
        <PremiumRate>0.20</PremiumRate>
        <PremiumBeforeDiscount>1000.00</PremiumBeforeDiscount>
        <PremiumDiscount>0.00</PremiumDiscount>
        <DiscountType></DiscountType>
        <PremiumAfterDiscount>1000.00</PremiumAfterDiscount>
<PremiumExcludingTaxEquivalent>1000.00</PremiumExcludingTaxEquivalent>
        <PremiumIncludingTax>1190.00</PremiumIncludingTax>
        <TaxesCharged>
            <TaxCharged>
                <TaxCode>VAT</TaxCode>
                <TaxRate>0.18</TaxRate>
                <TaxAmount>360</TaxAmount>
            </TaxCharged>
            <TaxCharged>
                <TaxCode>WITHHOLDING</TaxCode>
                <TaxRate>0.01</TaxRate>
                <TaxAmount>20</TaxAmount>
            </TaxCharged>
        </TaxesCharged>
    </RiskCovered>
</RisksCovered>
<SubjectMattersCovered>
    <SubjectMatter>
        <SubjectMatterReference>HSB001</SubjectMatterReference>
        <SubjectMatterDesc>School Bus</SubjectMatterDesc>
    </SubjectMatter>
</SubjectMattersCovered>
<CoverNoteAddons>
    <CoverNoteAddon>
        <AddonReference>1</AddonReference>
        <AddonDesc>Wind Shield</AddonDesc>
        <AddonAmount>2000</AddonAmount>
        <AddonPremiumRate>0.02</AddonPremiumRate>
        <PremiumExcludingTax>2000.00</PremiumExcludingTax>
<PremiumExcludingTaxEquivalent>2000.00</PremiumExcludingTaxEquivalent>
        <PremiumIncludingTax>2380.00</PremiumIncludingTax>
        <TaxesCharged>
            <TaxCharged>
                <TaxCode>VAT</TaxCode>
                <TaxRate>0.18</TaxRate>
                <TaxAmount>360</TaxAmount>
            </TaxCharged>
            <TaxCharged>
                <TaxCode>WITHHOLDING</TaxCode>
                <TaxRate>0.01</TaxRate>
                <TaxAmount>20</TaxAmount>
            </TaxCharged>
        </TaxesCharged>
    </CoverNoteAddon>
    <CoverNoteAddon>
        <AddonReference>2</AddonReference>
        <AddonDesc>Radio</AddonDesc>
        <AddonAmount>1000</AddonAmount>
        <AddonPremiumRate>0.02</AddonPremiumRate>
        <PremiumExcludingTax>2000.00</PremiumExcludingTax>
<PremiumExcludingTaxEquivalent>2000.00</PremiumExcludingTaxEquivalent>
        <PremiumIncludingTax>2380.00</PremiumIncludingTax>
        <TaxesCharged>
            <TaxCharged>

```

```

        <TaxCode>VAT</TaxCode>
        <TaxRate>0.18</TaxRate>
        <TaxAmount>360</TaxAmount>
    </TaxCharged>
    <TaxCharged>
        <TaxCode>WITHHOLDING</TaxCode>
        <TaxRate>0.01</TaxRate>
        <TaxAmount>20</TaxAmount>
    </TaxCharged>
</TaxesCharged>
</CoverNoteAddons>
</CoverNoteAddons>
<PolicyHolders>
    <PolicyHolder>
        <PolicyHolderName>Augustino Aidan Mwageni</PolicyHolderName>
        <PolicyHolderBirthDate>1920-02-05</PolicyHolderBirthDate>
        <PolicyHolderBirtAge>20</PolicyHolderBirtAge>
        <PolicyHolderType>1</PolicyHolderType>
        <PolicyHolderIdNumber>24241241</PolicyHolderIdNumber>
        <PolicyHolderIdType>1</PolicyHolderIdType>
        <Gender></Gender>
        <CountryCode>TZA</CountryCode>
        <Region>Region</Region>
        <District>Ilala</District>
        <Street></Street>
    <PolicyHolderPhoneNumber>255713525539</PolicyHolderPhoneNumber>
        <PolicyHolderFax></PolicyHolderFax>
        <PostalAddress></PostalAddress>
        <EmailAddress></EmailAddress>
    </PolicyHolder>
    <PolicyHolder>
        <PolicyHolderName>KISWIGU Company Ltd</PolicyHolderName>
        <PolicyHolderBirthDate>1950-02-05</PolicyHolderBirthDate>
        <PolicyHolderType>2</PolicyHolderType>
        <PolicyHolderIdNumber>3452525235525</PolicyHolderIdNumber>
        <PolicyHolderIdType>3</PolicyHolderIdType>
        <Gender></Gender>
        <CountryCode>TZA</CountryCode>
        <Region>Region</Region>
        <District>Ilala</District>
        <Street></Street>
    <PolicyHolderPhoneNumber>255713525539</PolicyHolderPhoneNumber>
        <PolicyHolderFax></PolicyHolderFax>
        <PostalAddress></PostalAddress>
        <EmailAddress></EmailAddress>
    </PolicyHolder>
</PolicyHolders>
</CoverNoteDtl>
</CoverNoteRefReq>
<MsgSignature>figuiiojwjfuuehgrhgherheihfegheheiofwhefioewiofhiwhfiowhfi</MsgSignature>
</TiraMsg>

```

Tag Name	Data Type	Condition	Tag Definition
CoverNoteRefReq:- Cover Note request sub root element			
CoverNoteHdr:- Cover note header details sub root element			

RequestId	String(50)	Mandatory	Unique identification assigned by insurer for each request
CompanyCode	String(6)	Mandatory	TIRA assigned identification for the System owner submitting data to TIRAMIS
SystemCode	String(12)	Mandatory	System identification assigned by TIRA to the system submitting data
CallBackUrl	String(250)	Mandatory	A callback URL for asynchronous processing in order to be notified on the final response of the request
InsurerCompanyCode	String(6)	Mandatory	Insurer code to be given by TIRA
TranCompanyCode	String(6)	Mandatory	Identification code of the entity which did sale the submitted Cover Note details. It is given by TIRA
CoverNoteType	Number(1)	Mandatory	Type of Cover Note being submitted: 1. New 2. Renew 3. Endorsement
CoverNoteDtl:Sub root element for cover note details			
CoverNoteNumber	String(50)	Mandatory	Cover Note identification

			number assigned by insurer
PrevCoverNoteReferenceNumber	String(50)	Optional for Cover Note data, Mandatory for any endorsement	Previous Cover Note assigned by TIRA in case of Endorsement
SalePointCode	String(12)	Mandatory	Sale Point code to be given by TIRA
CoverNoteStartDate	DateTime	Mandatory	Cover Note start date and time as per YYYY-MM-DD'T'HH:MM:SS eng (2021-07-30T23:59:59) format
CoverNoteEndDate	DateTime	Mandatory	Cover Note end date and time as per YYYY-MM-DD'T'HH:MM:SS eng (2022-08-29T23:59:59) format
CoverNoteDesc	String(1000)	Mandatory	Cover Note description
OperativeClause	String(1000)	Mandatory	Cover Note operative clause
PaymentMode	Numeric(1)	Mandatory	Payment mode: 1. Cash 2. Cheque 3. EFT
CurrencyCode	String(3)	Mandatory	ISO 4217 currency code
ExchangeRate	Numeric(36,2)	Mandatory	Exchange rate
TotalPremiumExcludingTax	Numeric(36,2)	Mandatory	Total premium charged excluding taxes

TotalPremiumIncludingTax	Number(36,2)	Mandatory	Total premium charged including taxes
CommissionPaid	Numeric(36,2)	Mandatory/Optional	Paid commission in case of sale done through intermediaries.
CommissionRate	Numeric(36,2)	Mandatory/Optional	Commission rate on paid commission
OfficerName	String(100)	Mandatory	Name of the authorizing office
OfficerTitle	String(100)	Mandatory	title of the authorizing office
ProductCode	String(50)	Mandatory	Insurance product code to be given by TIRA
RisksCovered: Sub root element for the risks covered for holding the risks covered			
RiskCovered: Sub root element for an individual risk covered			
RiskCode	String(50)	Mandatory	Risk code to be given by TIRA
SumInsured	Numeric(36,2)	Mandatory	Risk Sum Insured
SumInsuredEquivalent	Numeric(36,2)	Mandatory	Sum insured equivalent amount
PremiumRate	Numeric(36,2)	Mandatory	Risk premium rate charged
PremiumBeforeDiscount	Numeric(36,2)	Mandatory	Premium before discount
PremiumDiscount	Numeric(36,2)	Optional	Premium discount
DiscountType	Numeric(1)	Optional	Discount type: 1 – Fleet
PremiumAfterDiscount	Numeric(36,2)	Mandatory	Premium after discount

PremiumExcludingTaxEquivalent	Numeric(36,2)	Mandatory	Risk premium charged excluding taxes
PremiumIncludingTax	Numeric(36,2)	Mandatory	Risk premium charged including taxes
TaxesCharged: Sub root element for the taxes charged for holding the taxes charged			
TaxCharged: Sub root element for an individual tax charged			
TaxCode	String(50)	Mandatory	Tax charged code to be given by TIRA
TaxRate	Numeric(36,2)	Mandatory	Tax rate
TaxAmount	Numeric(36,2)	Mandatory	Tax amount charged
SubjectMattersCovered: Sub root element for the subject matters for holding the subject matters			
SubjectMatter: Sub root element for an individual subject matter			
SubjectMatterReference	String(50)	Mandatory	Subject matter covered reference number assigned by insurer
SubjectMatterDesc	String(250)	Mandatory	Subject matter covered description
CoverNoteAddons: Sub root element for Cover Notes Addons for holding Cover Note Addons			
CoverNoteAddon: Sub root element for an individual Cover Note Addon			
AddonReference	String(50)	Mandatory	Add-on reference number assigned by Insurer
AddonDesc	String(250)	Mandatory	Add-on description
AddonAmount	Numeric(36,2)	Mandatory	Add-on insured amount

AddonPremiumRate	Numeric(36,2)	Mandatory	Add-on charged premium rate
PremiumExcludingTax	Numeric(36,2)	Mandatory	Add-on charged premium excluding taxes
PremiumExcludingTaxEquivalent	Numeric(36,2)	Mandatory	Premium excluding tax equivalent
PremiumIncludingTax	Numeric(36,2)	Mandatory	Add-on charged premium including taxes
PolicyHolders: Sub root element for PolicyHolders for holding Policyholders			
PolicyHolder: Sub root element for an individual Policyholder			
PolicyHolderName	String(100)	Mandatory	Policyholder name
PolicyHolderBirthDate	Date	Mandatory	Policyholder Birth Date
PolicyHolderBirthAge	Numeric(50)	Mandatory	Policyholder age
PolicyHolderType	Numeric(1)	Mandatory	Policyholder Type values are: 1. For Individual 2. For Cooperate
PolicyHolderIdNumber	String(50)	Mandatory	Policyholder Identification Number
PolicyHolderIdType	Numeric(1)	Mandatory	Policyholder Identification type: 1. National Identification Number (NIN) 2. Voters registration number 3. Passport number
Gender	String(1)	Mandatory for individual and	Policyholder gender:

		optional for cooperate entity	F – Female M – Male
CountryCode	String(3)	Mandatory	Policyholder ISO 3166 international standard country codes (alpha-3)
Region	String(50)	Mandatory	Policyholder Tanzania region code to be given by TIRA
District	String(50)	Mandatory	Policyholder Tanzania District code to be given by TIRA
Street	String(50)	Mandatory	Policyholder street name
PolicyHolderPhoneNumber	String(50)	Mandatory	Policyholder registered phone number
PolicyHolderFax	String(50)	Optional	Policyholder Fax
PostalAddress	String(50)	Optional	Policyholder Postal address
EmailAddress	String(100)	Optional	Policyholder email address

4.2 Cover note or Endorsement data submission Request Acknowledgement – **CoverNoteRefReqAck**

```

<TiraMsg>
  <CoverNoteRefReqAck>
    <AcknowledgementId>TIRA22424232355</AcknowledgementId>
    <RequestId>NIC22424232355</RequestId>
    <AcknowledgementStatusCode>TIRA003</AcknowledgementStatusCode>
    <AcknowledgementStatusDesc>Received</AcknowledgementStatusDesc>
  </CoverNoteRefReqAck>
  <MsgSignature>btrhrtigronoirengoienfionewif</MsgSignature>
</TiraMsg>

```

Tag	Data Type	Tag definition
CoverNoteRefReqAck		Cover Note reference acknowledgment Header Information
AcknowledgementId	String(50)	Cover Note Request acknowledgement ID assigned by TIRA on a respective request from Insurer system
RequestId	String(50)	Insurer Request ID
AcknowledgementStatusCode	String(7)	Acknowledgement status code
AcknowledgementStatusDesc	String(100)	Acknowledgement status description

4.3 Cover Note or Endorsement Data Submission Final Response – **CoverNoteRefRes**

```

<TiraMsg>
  <CoverNoteRefRes>
    <ResponseId>TIRA22424232355</ResponseId>
    <RequestId>NIC22424232355</RequestId>
    <CoverNoteReferenceNumber>3325253254</CoverNoteReferenceNumber>
    <ResponseStatusCode>TIRA001</ResponseStatusCode>
    <ResponseStatusDesc>Successful</ResponseStatusDesc>
  </CoverNoteRefRes>
  <MsgSignature>btrhrtigrono irengo ienfionewif</MsgSignature>
</TiraMsg>

```

Tag	Data Type	Condition	Tag definition
CoverNoteRefRes			Cover Note/ endorsement header information
ResponseId	String(50)	Mandatory	TIRAMIS response ID
RequestId	String(50)	Mandatory	Insurer request ID
CoverNoteReferenceNumber	String(50)	Mandatory/O ptional	Assigned Cover Note reference Number by TIRA to be given to policyholder and used for Cover Note and policy tracking
ResponseStatusCode	String(7)		Response status code
ResponseStatusDesc	String(100)		Response status description

4.4 Cover Note or Endorsement data submission Final Response Acknowledgement - **CoverNoteRefResAck**

```

<TiraMsg>
  <CoverNoteRefResAck>
    <AcknowledgementId>NIC22424232355</AcknowledgementId>
    <ResponseId>TIRA22424232355</ResponseId>
    <AcknowledgementStatusCode>TIRA001</AcknowledgementStatusCode>
    <AcknowledgementStatusDesc>Successful</AcknowledgementStatusDesc>
  </CoverNoteRefResAck>
  <MsgSignature>btrhrtigrono irengoienfionewif</MsgSignature>
</TiraMsg>

```

Tag	Data Type	Tag definition
CoverNoteRefResAck		Cover Note reference acknowledgment Header Information
AcknowledgementId	String(50)	Cover Note Response acknowledgment ID assigned by INSURER on a respective response from TIRAMIS system
ResponseId	String(50)	TIRAMIS Response ID
AcknowledgementStatusCode	String(7)	Acknowledgement status code
AcknowledgementStatusDesc	String(100)	Acknowledgement status description

5. MOTOR INSURANCES COVER NOTE AND ENDORSEMENT DATA SUBMISSION

5.1 Motor Insurance Cover Note or Endorsement Submission Data Request - *MotorCoverNoteRefReq*

```
<TiraMsg>
  <MotorCoverNoteRefReq>
    <CoverNoteHdr>
      <RequestId>NIC22424232355</RequestId>
      <CompanyCode>IC0003</CompanyCode>
      <SystemCode>SYS0003</SystemCode>

    <CallBackUrl>http://nic.co.tz/api/CoverNoteref/response</CallBackUrl>
      <InsurerCompanyCode>IC001</InsurerCompanyCode>
      <TranCompanyCode>IC001</TranCompanyCode>
      <CoverNoteType>1</CoverNoteType>
    </CoverNoteHdr>
    <CoverNoteDtl>
      <CoverNoteNumber>NIC00004</CoverNoteNumber>

    <PrevCoverNoteReferenceNumber>32525252</PrevCoverNoteReferenceNumber>
      <SalePointCode>SP001</SalePointCode>
      <CoverNoteStartDate>2020-09-15T13:55:22</CoverNoteStartDate>
      <CoverNoteEndDate>2021-07-30T23:59:59</CoverNoteEndDate>
      <CoverNoteDesc>CoverNote for Residential House Insurance at Dar es
Salaam Magomeni</CoverNoteDesc>
      <OperativeClause>Fire and Allied Perils</OperativeClause>
      <PaymentMode>1</PaymentMode>
      <CurrencyCode>USD</CurrencyCode>
      <ExchangeRate>2000.00</ExchangeRate>
      <TotalPremiumExcludingTax>3000.00</TotalPremiumExcludingTax>
      <TotalPremiumIncludingTax>3380.00</TotalPremiumIncludingTax>
      <CommisionPaid>0.00</CommisionPaid>
      <CommisionRate>0.00</CommisionRate>
      <IsFleet>Y</IsFleet>
      <FleetId>FL122340</FleetId>
      <FleetSize>23</FleetSize>
      <ComprehensiveInsured>20</ComprehensiveInsured>
      <FleetEntry>1</FleetEntry>
      <OfficerName>John Doe</OfficerName>
      <OfficerTitle>Underwriter</OfficerTitle>
      <ProductCode>CP20100000</ProductCode>
      <RisksCovered>
        <RiskCovered>
          <RiskCode>RK20100001</RiskCode>
          <SumInsured>5000</SumInsured>
          <SumInsuredEquivalent>5000</SumInsuredEquivalent>
          <PremiumRate>0.20</PremiumRate>
          <PremiumBeforeDiscount>1000.00</PremiumBeforeDiscount>
          <PremiumDiscount>0.00</PremiumDiscount>
          <DiscountType></DiscountType>
          <PremiumAfterDiscount>1000.00</PremiumAfterDiscount>

        <PremiumExcludingTaxEquivalent>1000.00</PremiumExcludingTaxEquivalent>
        <PremiumIncludingTax>1190.00</PremiumIncludingTax>
        <TaxesCharged>
          <TaxCharged>
            <TaxCode>VAT</TaxCode>
            <TaxRate>0.18</TaxRate>
            <TaxAmount>180</TaxAmount>


```

```

        </TaxCharged>
        <TaxCharged>
            <TaxCode>WITHHOLDING</TaxCode>
            <TaxRate>0.01</TaxRate>
            <TaxAmount>10</TaxAmount>
        </TaxCharged>
    </TaxesCharged>
</RiskCovered>
<RiskCovered>
    <RiskCode>RK20100002</RiskCode>
    <SumInsured>5000</SumInsured>
    <SumInsuredEquivalent>5000</SumInsuredEquivalent>
    <PremiumRate>0.20</PremiumRate>
    <PremiumBeforeDiscount>1000.00</PremiumBeforeDiscount>
    <PremiumDiscount>0.00</PremiumDiscount>
    <DiscountType></DiscountType>
    <PremiumAfterDiscount>1000.00</PremiumAfterDiscount>
<PremiumExcludingTaxEquivalent>1000.00</PremiumExcludingTaxEquivalent>
    <PremiumIncludingTax>1190.00</PremiumIncludingTax>
    <TaxesCharged>
        <TaxCharged>
            <TaxCode>VAT</TaxCode>
            <TaxRate>0.18</TaxRate>
            <TaxAmount>360</TaxAmount>
        </TaxCharged>
        <TaxCharged>
            <TaxCode>WITHHOLDING</TaxCode>
            <TaxRate>0.01</TaxRate>
            <TaxAmount>20</TaxAmount>
        </TaxCharged>
    </TaxesCharged>
</RiskCovered>
</RisksCovered>
<SubjectMattersCovered>
    <SubjectMatter>
        <SubjectMatterReference>HSB001</SubjectMatterReference>
        <SubjectMatterDesc>School Bus</SubjectMatterDesc>
    </SubjectMatter>
</SubjectMattersCovered>
<CoverNoteAddons>
    <CoverNoteAddon>
        <AddonReference>1</AddonReference>
        <AddonDesc>Wind Shield</AddonDesc>
        <AddonAmount>2000</AddonAmount>
        <AddonPremiumRate>0.02</AddonPremiumRate>
        <PremiumExcludingTax>2000.00</PremiumExcludingTax>
<PremiumExcludingTaxEquivalent>2000.00</PremiumExcludingTaxEquivalent>
    <PremiumIncludingTax>2380.00</PremiumIncludingTax>
    <TaxesCharged>
        <TaxCharged>
            <TaxCode>VAT</TaxCode>
            <TaxRate>0.18</TaxRate>
            <TaxAmount>360</TaxAmount>
        </TaxCharged>
        <TaxCharged>
            <TaxCode>WITHHOLDING</TaxCode>
            <TaxRate>0.01</TaxRate>
            <TaxAmount>20</TaxAmount>
        </TaxCharged>

```

```

        </TaxesCharged>
    </CoverNoteAddon>
    <CoverNoteAddon>
        <AddonReference>2</AddonReference>
        <AddonDesc>Radio</AddonDesc>
        <AddonAmount>1000</AddonAmount>
        <AddonPremiumRate>0.02</AddonPremiumRate>
        <PremiumExcludingTax>2000.00</PremiumExcludingTax>
    <PremiumExcludingTaxEquivalent>2000.00</PremiumExcludingTaxEquivalent>
    <PremiumIncludingTax>2380.00</PremiumIncludingTax>
    <TaxesCharged>
        <TaxCharged>
            <TaxCode>VAT</TaxCode>
            <TaxRate>0.18</TaxRate>
            <TaxAmount>360</TaxAmount>
        </TaxCharged>
        <TaxCharged>
            <TaxCode>WITHHOLDING</TaxCode>
            <TaxRate>0.01</TaxRate>
            <TaxAmount>20</TaxAmount>
        </TaxCharged>
    </TaxesCharged>
</CoverNoteAddon>
</CoverNoteAddons>
<PolicyHolders>
    <PolicyHolder>
        <PolicyHolderName>Augustino Aidan Mwageni</PolicyHolderName>
        <PolicyHolderBirthDate>1920-02-05</PolicyHolderBirthDate>
        <PolicyHolderBirtAge>20</PolicyHolderBirtAge>
        <PolicyHolderType>1</PolicyHolderType>
        <PolicyHolderIdNumber>24241241</PolicyHolderIdNumber>
        <PolicyHolderIdType>1</PolicyHolderIdType>
        <Gender></Gender>
        <CountryCode>TZA</CountryCode>
        <Region>Region</Region>
        <District>Ilala</District>
        <Street></Street>
    <PolicyHolderPhoneNumber>255713525539</PolicyHolderPhoneNumber>
    <PolicyHolderFax></PolicyHolderFax>
    <PostalAddress></PostalAddress>
    <EmailAddress></EmailAddress>
</PolicyHolder>
    <PolicyHolder>
        <PolicyHolderName>KISWIGU Company Ltd</PolicyHolderName>
        <PolicyHolderBirthDate>1950-02-05</PolicyHolderBirthDate>
        <PolicyHolderType>2</PolicyHolderType>
        <PolicyHolderIdNumber>3452525235525</PolicyHolderIdNumber>
        <PolicyHolderIdType>3</PolicyHolderIdType>
        <Gender></Gender>
        <CountryCode>TZA</CountryCode>
        <Region>Region</Region>
        <District>Ilala</District>
        <Street></Street>
    <PolicyHolderPhoneNumber>255713525539</PolicyHolderPhoneNumber>
    <PolicyHolderFax></PolicyHolderFax>
    <PostalAddress></PostalAddress>
    <EmailAddress></EmailAddress>
</PolicyHolder>

```

```

</PolicyHolders>
<MotorDtl>
  <MotorCategory>1</MotorCategory>
  <RegistrationNumber>T241QWA</RegistrationNumber>
  <ChassisNumber>NCP314345436334</ChassisNumber>
  <Make>Toyota</Make>
  <Model>IST</Model>
  <ModelNumber>TA232353455</ModelNumber>
  <BodyType>Station Wagon</BodyType>
  <Color>Blue</Color>
  <EngineNumber>2423253535</EngineNumber>
  <EngineCapacity>2300</EngineCapacity>
  <FuelUsed>Petrol</FuelUsed>
  <NumberOfAxles>3</NumberOfAxles>
  <AxleDistance></AxleDistance>
  <SittingCapacity></SittingCapacity>
  <YearOfManufacture>2001</YearOfManufacture>
  <TareWeight>2000</TareWeight>
  <GrossWeight>2000</GrossWeight>
  <MotorUsage>1</MotorUsage>
  <OwnerName>Juma Wamugamba</OwnerName>
  <OwnerCategory>1</OwnerCategory>
  <OwnerAddress></OwnerAddress>
</MotorDtl>
</CoverNoteDtl>
</MotorCoverNoteRefReq>

```

```

<MsgSignature>figuiiojwjfuuehgrhgherheihfegheheiofwhefioewiofhiwhfiowhfi</MsgSignature>
</TiraMsg>

```

Tag Name	Data Type	Condition	Tag Definition
MotorCoverNoteRefReq: Cover Note request sub root element			
CoverNoteHdr: Cover Note header details sub root element			
RequestId	String(50)	Mandatory	Unique identification assigned by insurer for each request
CompanyCode	String(6)	Mandatory	TIRA assigned identification for the System owner submitting data to TIRAMIS
SystemCode	String(12)	Mandatory	System identification assigned by TIRA to the system submitting data
CallbackUrl	String(250)	Mandatory	A callback URL for asynchronous processing in order to be notified on the final

			response of the request
InsurerCompanyCode	String(6)	Mandatory	Insurer code to be given by TIRA
TranCompanyCode	String(6)	Mandatory	Identification code of the entity which did sale the submitted Cover Note details. It is given by TIRA.
CoverNoteType	number(1)	Mandatory	Type of Cover Note being submitted 4. For new 5. For renew
CoverNoteDtl: Sub root element for Cover Note details			
CoverNoteNumber	String(50)	Mandatory	Cover Note identification number assigned by insurer
PrevCoverNoteReferenceNumber	String(50)	Optional for Cover Note data, Mandatory for any endorsement	Previous Cover Note assigned by TIRA in case of Endorsement
SalePointCode	String(12)	Mandatory	Sale Point code to be given by TIRA
CoverNoteStartDate	DateTime	Mandatory	Cover Note start date and time as per YYYY-MM-DD'T'HH:MM:SS eng (2021-07-30T23:59:59) format
CoverNoteEndDate	DateTime	Mandatory	Cover Note end date and time as per YYYY-MM-DD'T'HH:MM:SS eng (2022-08-29T23:59:59) format
CoverNoteDesc	String(1000)	Mandatory	Cover Note description
OperativeClause	String(1000)	Mandatory	Cover Note operative clause

PaymentMode	Numeric(1)	Mandatory	Payment mode: 1. Cash 2. Cheque 3. EFT
CurrencyCode	String(3)	Mandatory	ISO 4217 currency code
ExchangeRate	Numeric(36,2)	Mandatory	Exchange rate
TotalPremiumExcludingTax	Numeric(36,2)	Mandatory	Total premium charged excluding taxes
TotalPremiumIncludingTax	Number(36,2)	Mandatory	Total premium charged including taxes
CommissionPaid	Numeric(36,2)	Mandatory/Optional	Paid commission in case of sale done through intermediaries.
CommissionRate	Numeric(36,2)	Mandatory/Optional	Commission rate on paid commission
IsFleet	String(1)	Mandatory	If the motor is part of fleet: Y – Yes N – No
FleetId	String(50)	Mandatory/Optional	Fleet Identification number
FleetSize	Number(50)	Mandatory/Optional	Fleet size
ComprehensiveInsured	Number(50)	Optional/Mandatory	Number of risks comprehensively insured
FleetEntry	Number(50)	Optional/Mandatory	Entry number in a fleet
OfficerName	String(100)	Mandatory	Name of the authorizing office
OfficerTitle	String(100)	Mandatory	title of the authorizing office
ProductCode	String(50)	Mandatory	Insurance product code to be given by TIRA

RisksCovered: Sub root element for the risks covered for holding the risks covered**RiskCovered: Sub root element for an individual risk covered**

RiskCode	String(50)	Mandatory	Risk code to be given by TIRA
SumInsured	Numeric(36,2)	Mandatory	Risk Sum Insured
SumInsuredEquivalent	Numeric(36,2)	Mandatory	Risk sum insured equivalent amount
PremiumRate	Numeric(36,2)	Mandatory	Risk premium rate charged
PremiumBeforeDiscount	Numeric(36,2)	Mandatory	Risk premium charged before discount
PremiumDiscount	Numeric(36,2)	Optional	Premium discount
DiscountType	Numeric(1)	Optional	Discount type: 1 – Fleet
PremiumAfterDiscount	Numeric(36,2)	Mandatory	Premium after discount
PremiumExcludingTaxEquivalent	Numeric(36,2)	Mandatory	Premium excluding tax equivalent amount
PremiumExcludingTax	Numeric(36,2)	Mandatory	Risk premium charged excluding taxes
PremiumIncludingTax	Numeric(36,2)	Mandatory	Risk premium charged including taxes

TaxesCharged: Sub root element for the taxes charged for holding taxes charged**TaxCharged: Sub root element for an individual tax charged**

TaxCode	String(50)	Mandatory	Tax charged code to be given by TIRA
TaxRate	Numeric(36,2)	Mandatory	Tax rate
TaxAmount	Numeric(36,2)	Mandatory	Tax amount charged

SubjectMattersCovered: Sub root element for the subject matters covered for holding subject matters covered**SubjectMatter: Sub root element for an individual subject matter covered**

SubjectMatterReference	String(50)	Mandatory	Subject matter covered reference
-------------------------------	------------	-----------	----------------------------------

			number assigned by insurer
SubjectMatterDesc	String(250)	Mandatory	Subject matter covered description
CoverNoteAddons: Sub root element for the Cover Note Addons for holding subject matters covered			
CoverNoteAddon: Sub root element for an individual Cover Note Addon			
AddonReference	String(50)	Mandatory	Add-on reference number assigned by Insurer
AddonDesc	String(250)	Mandatory	Add-on description
AddonAmount	Numeric(36,2)	Mandatory	Add-on insured amount
AddonPremiumRate	Numeric(36,2)	Mandatory	Add-on charged premium rate
PremiumExcludingTax	Numeric(36,2)	Mandatory	Add-on charged premium excluding taxes
PremiumExcludingTaxEquivalent	Numeric(36,2)	Mandatory	Premium excluding tax equivalent amount
PremiumIncludingTax	Numeric(36,2)	Mandatory	Add-on charged premium including taxes
PolicyHolders: Sub root element for Policyholders for holding the Policyholders			
PolicyHolder: Sub root element for an individual Policyholder			
PolicyHolderName	String(100)	Mandatory	Policyholder name
PolicyHolderBirthDate	Date	Mandatory	Policyholder Birth Date
PolicyHolderType	Numeric(1)	Mandatory	Policyholder Type values are: 1. For Individual 2. For Cooperate
PolicyHolderIdNumber	String(50)	Mandatory	Policyholder Identification Number
PolicyHolderIdType	Number(1)	Mandatory	Policyholder Identification type:

			<ol style="list-style-type: none"> 1. National Identification Number (NIN) 2. Voters registration number 3. Passport number
Gender	String(1)	Mandatory for individual and optional for cooperate entity	Policyholder gender: F – Female M – Male
CountryCode	String(3)	Mandatory	Policyholder ISO 3166 international standard country codes (alpha-3)
Region	String(50)	Mandatory	Policyholder Tanzania region code to be given by TIRA
District	String(50)	Mandatory	Policyholder Tanzania District code to be given by TIRA
Street	String(50)	Mandatory	Policyholder street name
PolicyHolderPhoneNumber	String(50)	Mandatory	Policyholder registered phone number
PolicyHolderFax	String(50)	Optional	Policyholder Fax
PostalAddress	String(50)	Optional	Policyholder Postal address
EmailAddress	String(100)	Optional	Policyholder email address
MotorDtl: Motor details header information			
MotorCategory	Numeric(1)	Mandatory	Motor category: 1 – Motor vehicle 2 –Motor cycle
RegistrationNumber	String(50)	Mandatory/Optional	Registration number
ChassisNumber	String(50)	Mandatory	Chassis number
Make	String(100)	Mandatory	Make

Model	String(100)	Mandatory	Model
ModelNumber	String(100)	Mandatory	model number
BodyType	String(100)	Mandatory	Body Type
Color	String(100)	Mandatory	Color
EngineNumber	String(100)	Mandatory	engine Number
EngineCapacity	String(100)	Mandatory	Engine Capacity
FuelUsed	String(100)	Mandatory	fuel used
NumberOfAxles	Numeric(2)	Mandatory/Optional	Number of Axles
AxleDistance	Numeric(2)	Mandatory/Optional	Axle distance
SittingCapacity	Numeric(3)	Mandatory/Optional	Sitting Capacity
YearOfManufacture	Numeric(4)	Mandatory	Year of manufacture
TareWeight	Numeric(4)	Mandatory	Tare weight
GrossWeight	Numeric(4)	Mandatory	Gross weight
MotorUsage	Numeric(1)	Mandatory/Optional	Motor usage: 1 – Private 2 – Commercial
OwnerName	String(100)	Mandatory	Motor Owner name
OwnerCategory	Numeric(1)	Mandatory	Motor owner category: 1 – Sole proprietor 2 - Corporate
OwnerAddress	String(100)	Mandatory/Optional	Motor owner address

5.2 Cover Note or Endorsement data submission Request Acknowledgement- *MotorCoverNoteRefReqAck*

```
<TiraMsg>
  <MotorCoverNoteRefReqAck>
    <AcknowledgementId>TIRA22424232355</AcknowledgementId>
    <RequestId>NIC22424232355</RequestId>
    <AcknowledgementStatusCode>TIRA003</AcknowledgementStatusCode>
    <AcknowledgementStatusDesc>Received</AcknowledgementStatusDesc>
  </MotorCoverNoteRefReqAck>
  <MsgSignature>btrhrtigronoirengoienfionewif</MsgSignature>
</TiraMsg>
```

Tag	Data Type	Tag definition
MotorCoverNoteRefReqAck		Cover Note reference acknowledgment Header Information
AcknowledgementId	String(50)	Cover Note Request acknowledgement ID assigned by TIRA on a respective request from Insurer system
RequestId	String(50)	Insurer Request ID
AcknowledgementStatusCode	String(7)	Acknowledgement status code
AcknowledgementStatusDesc	String(100)	Acknowledgement status description

5.3 Cover Note or Endorsement Data Submission Final Response – *MotorCoverNoteRefRes*

```
<TiraMsg>
  <MotorCoverNoteRefRes>
    <ResponseId>TIRA22424232355</ResponseId>
    <RequestId>NIC22424232355</RequestId>
    <CoverNoteReferenceNumber>3325253254</CoverNoteReferenceNumber>
    <StickerNumber>332-24444-5253254</StickerNumber>
    <ResponseStatusCode>TIRA001</ResponseStatusCode>
    <ResponseStatusDesc>Successful</ResponseStatusDesc>
  </MotorCoverNoteRefRes>
  <MsgSignature>btrhrtigronoirengoienfionewif</MsgSignature>
</TiraMsg>
```

Tag	Data Type	Condition	Tag definition
MotorCoverNoteRefRes			Cover Note/ endorsement header information
ResponseId	String(50)	Mandatory	TIRAMIS response ID
RequestId	String(50)	Mandatory	Insurer request ID
CoverNoteReferenceNumber	String(50)	Mandatory	Assigned Cover Note reference Number by TIRAMIS to be given to

			policyholder and used for Cover Note and policy tracking
StickerNumber	String(50)	Mandatory	Assigned Sticker number by TIRAMIS
ResponseStatusCode	String(7)		Response status code
ResponseStatusDesc	String(100)		Response status description

5.4 Cover note or Endorsement data submission Final Response Acknowledgement - *MotorCoverNoteRefResAck*

```

<TiraMsg>
  <MotorCoverNoteRefResAck>
    <AcknowledgementId>NIC22424232355</AcknowledgementId>
    <ResponseId>TIRA22424232355</ResponseId >
    <AcknowledgementStatusCode>TIRA001</AcknowledgementStatusCode>
    <AcknowledgementStatusDesc>Successful</AcknowledgementStatusDesc>
  </MotorCoverNoteRefResAck>
  <MsgSignature>btrhrtigronoirengoienfionewif</MsgSignature>
</TiraMsg>

```

Tag	Data Type	Tag definition
MotorCoverNoteRefResAck		Cover Note reference acknowledgment Header Information
AcknowledgementId	String(50)	Cover Note Response acknowledgement ID assigned by INSURER on a respective response from TIRAMIS system
ResponseId	String(50)	TIRAMIS Response ID
AcknowledgementStatusCode	String(7)	Acknowledgement status code
AcknowledgementStatusDesc	String(100)	Acknowledgement status description

6. REINSURANCE DATA SUBMISSION

6.1 Reinsurance Data Submission Request - *ReinsuranceReq*

```

<TiraMsg>
  <ReinsuranceReq>
    <ReinsuranceHdr>
      <RequestId>NIC22424232355</RequestId>
      <CompanyCode>IC0003</CompanyCode>
      <SystemCode>SYS001</SystemCode>
    <CallBackUrl>http://nic.co.tz/api/CoverNoteref/response</CallBackUrl>
      <InsurerCompanyCode>IC0003</InsurerCompanyCode>
      <CoverNoteReferenceNumber>CV224223255</CoverNoteReferenceNumber>
      <PremiumIncludingTax>1220.00</PremiumIncludingTax>
      <CurrencyCode>USD</CurrencyCode>
      <ExchangeRate>2000.00</ExchangeRate>
      <AuthorizingOfficerName>John Doe</AuthorizingOfficerName>
      <AuthorizingOfficerTitle>CFO</AuthorizingOfficerTitle>
      <ReinsuranceCategory>1</ReinsuranceCategory>
    </ReinsuranceHdr>
    <ReinsuranceDtl>
      <ParticipantCode>IC0003</ParticipantCode>
      <ParticipantType>1</ParticipantType>
      <ReinsuranceForm>1</ReinsuranceForm>
      <ReinsuranceType>1</ReinsuranceType>
      <ReBrokerCode></ReBrokerCode>
      <BrokerageCommission>1</BrokerageCommission>
      <ReinsuranceCommission>0.87</ReinsuranceCommission>
      <PremiumShare>1061.40</PremiumShare>
      <ParticipationDate>2021-07-30T23:59:59</ParticipationDate>
    </ReinsuranceDtl>
    <ReinsuranceDtl>
      <ParticipantCode>IC0003</ParticipantCode>
      <ParticipantType>1</ParticipantType>
      <ReinsuranceForm>1</ReinsuranceForm>
      <ReinsuranceType>1</ReinsuranceType>
      <ReBrokerCode></ReBrokerCode>
      <BrokerageCommission>1</BrokerageCommission>
      <ReinsuranceCommission>0.87</ReinsuranceCommission>
      <PremiumShare>1061.40</PremiumShare>
      <ParticipationDate>2021-07-30T23:59:59</ParticipationDate>
    </ReinsuranceDtl>
  </ReinsuranceReq>
<MsgSignature>figuiiojwjfuuehgrhgherheihefefewbfwiufwnihfergiengi</MsgSignature>
</TiraMsg>

```

Tag Name	Data Type	Condition	Tag Definition
ReinsuranceReq: Reinsurance data submission request sub root element			
ReinsuranceHdr: Reinsurance data submission header details sub root element			
RequestId	String(50)	Mandatory	Unique identification assigned by insurer for each request
CompanyCode	String(6)	Mandatory	TIRA assigned identification for the System owner

			submitting data to TIRAMIS
SystemCode	String(12)	Mandatory	System identification assigned by TIRA to the system submitting data
CallBackUrl	String(250)	Mandatory	A callback URL for asynchronous processing in order to be notified on the final response of the request
InsurerCompanyCode	String(6)	Mandatory	Insurer code to be given by TIRA
CoverNoteReferenceNumber	String(6)	Mandatory	Cover Note reference number
PremiumIncludingTax	Number(1)	Mandatory	Premium charged including tax
CurrencyCode	String(3)	Mandatory	ISO 4217 currency code
ExchangeRate	Numeric(36,2)	Mandatory	Exchange rate
AuthorizingOfficerName	String(100)	Mandatory	Authorizing officer name
AuthorizingOfficerTitle	String(100)	Mandatory	Authorizing Officer title
ReinsuranceCategory	Numeric(1)	Mandatory	Reinsurance category 1. For facultative outward 2. For facultative inward
ReinsuranceDtl: Sub root element for Cover Note details			
ParticipantCode	String(50)	Mandatory	Insurer or Re-Insurer identification code given by TIRA
ParticipantType	Numeric(1)	Mandatory	Type of participation 1. Leader 2. Treaty Cession 3. Policy Cession outward

			<ul style="list-style-type: none"> 4. Facultative Outward Local 5. Facultative Outward Abroad 6. Facultative inward local 7. Facultative inward abroad
ReinsuranceForm	Numeric(1)	Mandatory	<p>Form of reinsurance</p> <ul style="list-style-type: none"> 1. Policy cession 2. Treat cession 3. Facultative
ReinsuranceType	Numeric(1)	Mandatory	<p>Type of reinsurance</p> <ul style="list-style-type: none"> 1. Facultative Proportion- Quota share 2. Facultative Non Proportion- Excess of Loss 3. Facultative Proportion- Surplus Treaty 4. Facultative Facultative Obligatory 5. Treaty Proportion- Quota share 6. Treaty Proportion- Surplus Treaty 7. Treaty Non Proportion -Excess of Loss 8. Treaty Non Proportion -Stop loss
ReBrokerCode	String(50)	Mandatory	Re insurance Broker Code given by TIRA
BrokerageCommission	Numeric(36,2)	Mandatory	Re insurance Brokerage commission paid

ReinsuranceCommission	Numeric(36,2)	Mandatory	Re insurance commission paid
PremiumShare	Numeric(36,2)	Mandatory	Re insurance Premium share (ceded or retained or received)
ParticipationDate	DateTime	Mandatory	Re insurance date and time as per YYYY-MM-DD'T'HH:MM:SS eng (2022-08-29T23:59:59) format

6.2 Reinsurance Data Submission Request Acknowledgement – *ReinsuranceReqAck*

```

<TiraMsg>
  <ReinsuranceReqAck>
    <AcknowledgementId>TIRA22424232355</AcknowledgementId>
    <RequestId>NIC22424232355</RequestId>
    <AcknowledgementStatusCode>TIRA003</AcknowledgementStatusCode>
    <AcknowledgementStatusDesc>Received</AcknowledgementStatusDesc>
  </ReinsuranceReqAck>
  <MsgSignature>btrhrtigronoirengoienfionewif</MsgSignature>
</TiraMsg>

```

Tag	Data Type	Tag definition
ReinsuranceReqAck		Re insurance acknowledgment Header Information
AcknowledgementId	String(50)	Re insurance Request acknowledgement ID assigned by TIRA on a respective request from Insurer system
RequestId	String(50)	Insurer Request ID
AcknowledgementStatusCode	String(7)	Acknowledgement status code
AcknowledgementStatusDesc	String(100)	Acknowledgement status description

6.3 Reinsurance Data Submission Request Final Response – *ReinsuranceRes*

```

<TiraMsg>
  <ReinsuranceRes>
    <ResponseId>TIRA22424232355</ResponseId>
    <RequestId>NIC22424232355</RequestId>
    <ResponseStatusCode>TIRA001</ResponseStatusCode>
    <ResponseStatusDesc>Successful</ResponseStatusDesc>
  </ReinsuranceRes>
  <MsgSignature>btrhrtigronoirengoienfionewiffjnniewnfinionwef</MsgSignature>

```

</TiraMsg>

Tag	Data Type	Condition	Tag definition
ReinsuranceRes			Re insurance header information
ResponseId	String(50)	Mandatory	TIRAMIS response ID
RequestId	String(50)	Mandatory	Insurer request ID
ResponseStatusCode	String(7)		Response status code
ResponseStatusDesc	String(100)		Response status description

6.4 Reinsurance Data Submission Request Final Response Acknowledgement - *ReinsuranceResAck*

```

<TiraMsg>
  <ReinsuranceResAck>
    <AcknowledgementId>NIC22424232355</AcknowledgementId>
    <ResponseId>TIRA22424232355</ResponseId >
    <AcknowledgementStatusCode>TIRA001</AcknowledgementStatusCode>
    <AcknowledgementStatusDesc>Successful</AcknowledgementStatusDesc>
  </MotorCoverNoteRefResAck>
  <MsgSignature>btrhrtigrono irengoienfionewif</MsgSignature>
</TiraMsg>

```

Tag	Data Type	Tag definition
ReinsuranceResAck		Re insurance response acknowledgment Header Information
AcknowledgementId	String(50)	Re insurance Response acknowledgment ID assigned by INSURER on a respective response from TIRAMIS system
ResponseId	String(50)	TIRAMIS Response ID
AcknowledgementStatusCode	String(7)	Acknowledgement status code
AcknowledgementStatusDesc	String(100)	Acknowledgement status description

7. POLICY DATA SUBMISSION

7.1 Policy Data Submission Request - *PolicyReq*

```

<TiraMsg>
  <PolicyReq>
    <PolicyHdr>
      <RequestId>NIC22424232355</RequestId>
      <CompanyCode>IC0003</CompanyCode>

```

```

    <SystemCode>SYS001</SystemCode>
<CallbackUrl>http://nic.co.tz/api/CoverNoteref/response</CallbackUrl>
    <InsurerCompanyCode>IC001</InsurerCompanyCode>
  </PolicyHdr>
  <PolicyDtl>
    <PolicyNumber>CV224223255</PolicyNumber>
<PolicyOperativeClause>uwbfuebwfuibwefbwiebfefbwfueiwfewbfubfuwfwibfweiuwbweiuwb
</PolicyOperativeClause>
    <SpecialConditions>veoighe8hioerhfiwe</SpecialConditions>
    <Exclusions>veoighe8higefrefeifoerhfiwe</Exclusions>
    <AppliedCoverNotes>
      <CoverNoteReferenceNumber>4242424</CoverNoteReferenceNumber>
      <CoverNoteReferenceNumber>2323235</CoverNoteReferenceNumber>
      <CoverNoteReferenceNumber>4353646</CoverNoteReferenceNumber>
    </AppliedCoverNotes>
  </PolicyDtl>
</PolicyReq>

<MsgSignature>figuiiojwjfuuehgrhgherheihfeghehefefewbfwiufwnihfergiengi</MsgSignature>
</TiraMsg>

```

Tag Name	Data Type	Condition	Tag Definition
PolicyReq: Policy data submission request sub root element			
PolicyHdr: Policy header data submission header details sub root element			
RequestId	String(50)	Mandatory	Unique identification assigned by insurer for each request
CompanyCode	String(6)	Mandatory	TIRA assigned identification for the System owner submitting data to TIRAMIS
SystemCode	String(12)	Mandatory	System identification assigned by TIRA to the system submitting data
CallbackUrl	String(250)	Mandatory	A callback URL for asynchronous processing in order to be notified on the final response of the request
InsurerCompanyCode	String(6)	Mandatory	Insurer code to be given by TIRA
PolicyDtl: Policy data details Sub root element			

PolicyNumber	String(50)	Mandatory	Policy number as per Insurer
PolicyOperativeClause	String(1000)	Mandatory	Policy Operative Clauses
SpecialConditions	String(1000)	Mandatory	Policy special conditions
Exclusions	String(1000)	Mandatory/Optional	Policy exclusions if any
AppliedCoverNotes			
CoverNoteReferenceNumber	String(50)	Mandatory	

7.2 Policy Data Submission Request Acknowledgement – *PolicyReqAck*

```

<TiraMsg>
  <PolicyReqAck>
    <AcknowledgementId>TIRA22424232355</AcknowledgementId>
    <RequestId>NIC22424232355</RequestId>
    <AcknowledgementStatusCode>TIRA003</AcknowledgementStatusCode>
    <AcknowledgementStatusDesc>Received</AcknowledgementStatusDesc>
  </PolicyReqAck>
  <MsgSignature>btrhrtigronoirengoienfionewif</MsgSignature>
</TiraMsg>

```

Tag	Data Type	Tag definition
PolicyReqAck		Policy submission request acknowledgment Header Information
AcknowledgementId	String(50)	Policy submission Request acknowledgment ID assigned by TIRA on a respective request from Insurer system
RequestId	String(50)	Insurer Request ID
AcknowledgementStatusCode	String(7)	Acknowledgement status code
AcknowledgementStatusDesc	String(100)	Acknowledgement status description

7.3 Policy Data Submission Request Final Response – *PolicyRes*

```

<TiraMsg>
  <PolicyRes>
    <ResponseId>TIRA22424232355</ResponseId>
    <RequestId>NIC22424232355</RequestId>
    <ResponseStatusCode>TIRA001</ResponseStatusCode>

```

```

    <ResponseStatusDesc>Successful</ResponseStatusDesc>
  </PolicyRes>
  <MsgSignature>btrhrtigrono irengoienfionewiffjnniewnfinionwef</MsgSignature>
</TiraMsg>

```

Tag	Data Type	Condition	Tag definition
PolicyRes			Policy data submission request final response header information
ResponseId	String(50)	Mandatory	TIRAMIS response ID
RequestId	String(50)	Mandatory	Insurer request ID
ResponseStatusCode	String(7)		Response status code
ResponseStatusDesc	String(100)		Response status description

7.4 Policy Data Submission Request Final Response Acknowledgement - *PolicyResAck*

```

<TiraMsg>
  <PolicyResAck>
    <AcknowledgementId>NIC22424232355</AcknowledgementId>
    <ResponseId>TIRA22424232355</ResponseId >
    <AcknowledgementStatusCode>TIRA001</AcknowledgementStatusCode>
    <AcknowledgementStatusDesc>Successful</AcknowledgementStatusDesc>
  </PolicyResAck>
  <MsgSignature>btrhrtigrono irengoienfionewif</MsgSignature>
</TiraMsg>

```

Tag	Data Type	Tag definition
PolicyResAck		Policy data submission request response acknowledgment Header Information
AcknowledgementId	String(50)	Policy data submission Response acknowledgement ID assigned by INSURER on a respective response from TIRAMIS system
ResponseId	String(50)	TIRAMIS Response ID
AcknowledgementStatusCode	String(7)	Acknowledgement status code
AcknowledgementStatusDesc	String(100)	Acknowledgement status description

8. COVER NOTE VERIFICATION

8.1 Covernote Verification Request - *CoverNoteVerificationReq*

```

<TiraMsg>
  <CoverNoteVerificationReq>
    <VerificationHdr>
      <RequestId>NIC22424232355</RequestId>
      <CompanyCode>IC0003</CompanyCode>
      <SystemCode>SYS0003</SystemCode>
    </VerificationHdr>
    <VerificationDtl>
      <CoverNoteReferenceNumber>4242424</CoverNoteReferenceNumber>
      <StickerNumber>1313-1414-124124</StickerNumber>
      <MotorRegistrationNumber>T233SQA</MotorRegistrationNumber>
      <MotorChassisNumber>4353646</MotorChassisNumber>
    </VerificationDtl>
  </CoverNoteVerificationReq>
  <MsgSignature>figuiiojwjfuufewbfwiufwnihfergiengi</MsgSignature>
</TiraMsg>

```

Tag Name	Data Type	Condition	Tag Definition
CoverNoteVerificationReq:- Cover Note Verification request sub root element			
VerificationHdr:- Verification header information sub root element			
RequestId	String(50)	Mandatory	Unique identification assigned by insurer for each request
CompanyCode	String(6)	Mandatory	TIRA assigned identification for the System owner submitting data to TIRAMIS
SystemCode	String(12)	Mandatory	System identification assigned by TIRA to the system submitting data
VerificationDtl: Verification parameter details Sub root element			
CoverNoteReferenceNumber	String(50)	Mandatory/Optional	Cover Note Reference Number
StickerNumber	String(50)	Optional	Motor Sticker Number
MotorRegistrationNumber	String(50)	Optional	Motor registration Number
MotorChassisNumber	String(50)	Optional	Motor Chassis number

8.2 Covernote Verification Response – *CoverNoteVerificationRes*

```
<TiraMsg>
  <CoverNoteVerificationRes>
    <CoverNoteHdr>
      <ResponseId>TIRA22424232355</ResponseId>
      <RequestId>NIC22424232355</RequestId>
      <ResponseStatusCode>TIRA001</ResponseStatusCode>
      <ResponseStatusDesc>Successful</ResponseStatusDesc>
    </CoverNoteHdr>
    <CoverNoteDtl>
      <CoverNoteTypeDesc>Endorsement</CoverNoteTypeDesc>
      <CoverNoteNumber>NIC00001</CoverNoteNumber>
      <CoverNoteReferenceNumber>45632525252</CoverNoteReferenceNumber>
    <PrevCoverNoteReferenceNumber>32525252</PrevCoverNoteReferenceNumber>
      <InsurerCompanyCode>IC0003</InsurerCompanyCode>
      <InsurerCompanyName>NIC</InsurerCompanyName>
      <TransactionCompanyCode>IC0003</TransactionCompanyCode>
      <TransactionCompanyName>NMB</TransactionCompanyName>
      <BranchCode>BR0003</BranchCode>
      <SalePointCode>SP0003</SalePointCode>
      <CoverNoteIssueDate>2020-07-30T23:24:22</CoverNoteIssueDate>
      <CoverNoteStartDate>2020-08-01T23:24:22</CoverNoteStartDate>
      <CoverNoteEndDate>2021-07-30T23:59:59</CoverNoteEndDate>
      <AuthorizationDate>2020-07-30T23:24:22</AuthorizationDate>
      <CoverNoteDesc>School Bus</CoverNoteDesc>
      <OperativeClause>Fire and Allied Perils</OperativeClause>
      <PaymentMode>1</PaymentMode>
      <CurrencyCode>USD</CurrencyCode>
      <ExchangeRate>2000.00</ExchangeRate>
      <TotalPremiumExcludingTax>1000.00</TotalPremiumExcludingTax>
      <TotalPremiumIncludingTax>1220.00</TotalPremiumIncludingTax>
      <CommissionPaid>0.00</CommissionPaid>
      <CommissionRate>0.00</CommissionRate>
      <IsFleet>Y</IsFleet>
      <FleetId>FL122340</FleetId>
      <FleetSize>23</FleetSize>
      <ComprehensiveInsured>20</ComprehensiveInsured>
      <FleetEntry>1</FleetEntry>
      <OfficerName>John Doe</OfficerName>
      <OfficerTitle>Underwriter</OfficerTitle>
      <ProductCode>CP20100000</ProductCode>
      <RisksCovered>
        <RiskCovered>
          <RiskCode>RK20100001</RiskCode>
          <SumInsured>5000</SumInsured>
          <PremiumRate>0.20</PremiumRate>
          <PremiumBeforeDiscount>1000.00</PremiumBeforeDiscount>
          <PremiumDiscount>0.00</PremiumDiscount>
          <DiscountType>1</DiscountType>
          <PremiumAfterDiscount>1000.00</PremiumAfterDiscount>
        <PremiumExcludingTaxEquivalent>1000.00</PremiumExcludingTaxEquivalent>
        <PremiumIncludingTax>1190.00</PremiumIncludingTax>
        <TaxesCharged>
          <TaxCharged>
            <TaxCode>VAT</TaxCode>
            <TaxRate>0.18</TaxRate>
            <TaxAmount>180</TaxAmount>
          </TaxCharged>
          <TaxCharged>
            <TaxCode>WITHHOLDING</TaxCode>
```

```

        <TaxRate>0.01</TaxRate>
        <TaxAmount>10</TaxAmount>
    </TaxCharged>
</TaxesCharged>
</RiskCovered>
<RiskCovered>
    <RiskCode>RK20100002</RiskCode>
    <SumInsured>5000</SumInsured>
    <PremiumRate>0.20</PremiumRate>
    <PremiumBeforeDiscount>1000.00</PremiumBeforeDiscount>
    <PremiumDiscount>0.00</PremiumDiscount>
    <DiscountType>1</DiscountType>
    <PremiumAfterDiscount>1000.00</PremiumAfterDiscount>
<PremiumExcludingTaxEquivalent>1000.00</PremiumExcludingTaxEquivalent>
    <PremiumIncludingTax>1190.00</PremiumIncludingTax>
    <TaxesCharged>
        <TaxCharged>
            <TaxCode>VAT</TaxCode>
            <TaxRate>0.18</TaxRate>
            <TaxAmount>180</TaxAmount>
        </TaxCharged>
        <TaxCharged>
            <TaxCode>WITHHOLDING</TaxCode>
            <TaxRate>0.01</TaxRate>
            <TaxAmount>10</TaxAmount>
        </TaxCharged>
    </TaxesCharged>
</RiskCovered>
</RisksCovered>
<SubjectMattersCovered>
    <SubjectMatter>
        <SubjectMatterReference>HSB001</SubjectMatterReference>
        <SubjectMatterDesc>School Bus</SubjectMatterDesc>
    </SubjectMatter>
</SubjectMattersCovered>
<CoverNoteAddons>
    <CoverNoteAddon>
        <AddonReference>1</AddonReference>
        <AddonDesc>Wind Shield</AddonDesc>
        <AddonAmount>2000</AddonAmount>
        <AddonPremiumRate>0.02</AddonPremiumRate>
        <PremiumExcludingTax>2000.00</PremiumExcludingTax>
<PremiumExcludingTaxEquivalent>2000.00</PremiumExcludingTaxEquivalent>
        <PremiumIncludingTax>2380.00</PremiumIncludingTax>
        <TaxesCharged>
            <TaxCharged>
                <TaxCode>VAT</TaxCode>
                <TaxRate>0.18</TaxRate>
                <TaxAmount>360</TaxAmount>
            </TaxCharged>
            <TaxCharged>
                <TaxCode>WITHHOLDING</TaxCode>
                <TaxRate>0.01</TaxRate>
                <TaxAmount>20</TaxAmount>
            </TaxCharged>
        </TaxesCharged>
    </CoverNoteAddon>
    <CoverNoteAddon>
        <AddonReference>1</AddonReference>
        <AddonDesc>Wind Shield</AddonDesc>
        <AddonAmount>2000</AddonAmount>

```

```

        <AddonPremiumRate>0.02</AddonPremiumRate>
        <PremiumExcludingTax>2000.00</PremiumExcludingTax>
    <PremiumExcludingTaxEquivalent>2000.00</PremiumExcludingTaxEquivalent>
    <PremiumIncludingTax>2380.00</PremiumIncludingTax>
    <TaxesCharged>
        <TaxCharged>
            <TaxCode>VAT</TaxCode>
            <TaxRate>0.18</TaxRate>
            <TaxAmount>360</TaxAmount>
        </TaxCharged>
        <TaxCharged>
            <TaxCode>WITHHOLDING</TaxCode>
            <TaxRate>0.01</TaxRate>
            <TaxAmount>20</TaxAmount>
        </TaxCharged>
    </TaxesCharged>
</CoverNoteAddon>
</CoverNoteAddons>
<PolicyHolders>
    <PolicyHolder>
        <PolicyHolderName>Augustino Aidan Mwageni</PolicyHolderName>
        <PolicyHolderBirthDate>1920-02-05</PolicyHolderBirthDate>
        <PolicyHolderType>1</PolicyHolderType>
        <PolicyHolderIdNumber>24241241</PolicyHolderIdNumber>
        <PolicyHolderIdType>1</PolicyHolderIdType>
        <Gender></Gender>
        <CountryCode>TZA</CountryCode>
        <Region>Region</Region>
        <District>Ilala</District>
        <Street></Street>
    <PolicyHolderPhoneNumber>255713525539</PolicyHolderPhoneNumber>
    <PolicyHolderFax></PolicyHolderFax>
    <PostalAddress></PostalAddress>
    <EmailAddress></EmailAddress>
    </PolicyHolder>
    <PolicyHolder>
        <PolicyHolderName>KISWIGU Company Ltd</PolicyHolderName>
        <PolicyHolderBirthDate>1950-02-05</PolicyHolderBirthDate>
        <PolicyHolderType>2</PolicyHolderType>
        <PolicyHolderIdNumber>3452525235525</PolicyHolderIdNumber>
        <PolicyHolderIdType>3</PolicyHolderIdType>
        <Gender></Gender>
        <CountryCode>TZA</CountryCode>
        <Region>Region</Region>
        <District>Ilala</District>
        <Street></Street>
    <PolicyHolderPhoneNumber>255713525539</PolicyHolderPhoneNumber>
    <PolicyHolderFax></PolicyHolderFax>
    <PostalAddress></PostalAddress>
    <EmailAddress></EmailAddress>
    </PolicyHolder>
</PolicyHolders>
<MotorDtl>
    <MotorCategory>1</MotorCategory>
    <RegistrationNumber>T241QWA</RegistrationNumber>
    <ChassisNumber>NCP314345436334</ChassisNumber>
    <Make>Toyota</Make>
    <Model>IST</Model>
    <ModelNumber>TA232353455</ModelNumber>
    <BodyType>Station Wagon</BodyType>

```

```

        <Color>Blue</Color>
        <EngineNumber>2423253535</EngineNumber>
        <EngineCapacity>2300</EngineCapacity>
        <FuelUsed>Petrol</FuelUsed>
        <NumberOfAxles>3</NumberOfAxles>
        <AxleDistance></AxleDistance>
        <SittingCapacity></SittingCapacity>
        <YearOfManufacture>2001</YearOfManufacture>
        <TareWeight>2000</TareWeight>
        <GrossWeight>2000</GrossWeight>
        <MotorUsage>Private</MotorUsage>
        <OwnerName>Juma Wamugamba</OwnerName>
        <OwnerCategory>1</OwnerCategory>
        <OwnerAddress></OwnerAddress>
    </MotorDtl>
</CoverNoteDtl>
</CoverNoteVerificationRes>
<MsgSignature>figuiiojwjfuuehgrhgherheihfegheheiofwhefioewiofhiwhfiowhfi</MsgSignature>
</TiraMsg>

```

Tag Name	Data Type	Condition	Tag Definition
CoverNoteVerificationRes: Cover Note response sub root element			
CoverNoteHdr: Cover Note header details sub root element			
ResponseId	String(50)	Mandatory	TIRAMIS response ID
RequestId	String(50)	Mandatory	Insurer request ID
ResponseStatusCode	String(7)	Mandatory	Response status code
ResponseStatusDesc	String(100)	Mandatory	Response status description
CoverNoteDtl: Sub root element for Cover Note details			
CoverNoteTypeDesc	String(50)	Mandatory	Type of Cover Note
CoverNoteNumber	String(50)	Mandatory	Cover Note identification number assigned by insurer
CoverNoteReferenceNumber	String(50)	Mandatory	Cover Note reference number
PrevCoverNoteReferenceNumber	String(50)	Optional for Cover Note data, Mandatory for any endorsement	Previous Cover Note assigned by TIRA in case of Endorsement
InsurerCompanyCode	String(6)	Mandatory	Insurer code to be given by TIRA
InsurerCompanyName	String(100)	Optional	Insurer company name

TransactionCompanyCode	String(6)	Mandatory	Identification code of the entity which did sale the submitted Cover Note details to be given by TIRA
TransactionCompanyName	String(100)	Mandatory	Name of company which did transaction
BranchCode	String(6)	Mandatory	Branch code of the company which did transaction
SalePointCode	String(6)	Mandatory	Sales point code of the company which did transaction
CoverNoteIssueDate	DateTime	Mandatory	Cover Note issue date and time as per YYYY-MM-DD'T'HH:MM:SS eng (2021-07-30T23:59:59) format
CoverNoteStartDate	DateTime	Mandatory	Cover Note start date and time as per YYYY-MM-DD'T'HH:MM:SS eng (2021-07-30T23:59:59) format
CoverNoteEndDate	DateTime	Mandatory	Cover Note end date and time as per YYYY-MM-DD'T'HH:MM:SS eng (2021-07-30T23:59:59) format
AuthorizationDate	DateTime	Mandatory	Cover Note authorization date and time as per YYYY-MM-DD'T'HH:MM:SS eng (2021-07-30T23:59:59) format
CoverNoteDesc	String(1000)	Mandatory	Cover Note description
OperativeClause	String(1000)	Mandatory	Cover Note operative clause

PaymentMode	Numeric(1)	Mandatory	Payment mode: 1. Cash 2. Cheque 3. EFT
CurrencyCode	String(3)	Mandatory	ISO 4217 currency code
ExchangeRate	Numeric(36,2)	Mandatory	Exchange rate
TotalPremiumExcludingTax	Numeric(36,2)	Mandatory	Total premium charged excluding taxes
TotalPremiumIncludingTax	Number(36,2)	Mandatory	Total premium charged including taxes
CommissionPaid	Numeric(36,2)	Optional/Mandatory	Paid commission in case of sale done through intermediaries.
CommissionRate	Numeric(36,2)	Optional/Mandatory	Commission rate on paid commission
IsFleet	String(1)	Mandatory	If risk is part of fleet: Y - Yes N - No
FleetId	String(50)	Optional/Mandatory	Fleet Identification number
FleetSize	Number(50)	Optional/Mandatory	Fleet size
ComprehensiveInsured	Number(50)	Optional/Mandatory	Number of risks comprehensively insured
FleetEntry	Number(50)	Optional/Mandatory	Entry number in a fleet
OfficerName	String(100)	Mandatory	Name of the authorizing office
OfficerTitle	String(100)	Mandatory	Title of the authorizing office
ProductCode	String(50)	Mandatory	Insurance product code given by TIRA

RisksCovered: Sub root element for the risks covered for holding the risks covered**RiskCovered: Sub root element for an individual risk covered**

RiskCode	String(50)	Mandatory	Risk code to be given by TIRA
SumInsured	Numeric(36,2)	Mandatory	Risk Sum Insured
PremiumRate	Numeric(36,2)	Mandatory	Risk premium rate charged
PremiumBeforeDiscount	Numeric(36,2)	Mandatory	Risk premium before discount
PremiumDiscount	Numeric(36,2)	Mandatory	Risk premium discount
PremiumAfterDiscount	Numeric(36,2)	Mandatory	Risk premium after discount
PremiumExcludingTaxEquivalent	Numeric(36,2)	Mandatory	Risk premium excluding tax equivalent amount
PremiumEquivalentAmount	Numeric(36,2)	Mandatory	Risk premium charged equivalent amount
PremiumIncludingTax	Numeric(36,2)	Mandatory	Risk premium charged including taxes

TaxesCharged: Sub root element for the taxes charged for holding the taxes charged**TaxCharged: Sub root element for an individual tax charged**

TaxCode	String(50)	Mandatory	Tax charged code to be given by TIRA
TaxRate	Numeric(36,2)	Mandatory	Tax rate
TaxAmount	Numeric(36,2)	Mandatory	Tax amount charged

SubjectMattersCovered: Sub root element for the subject matters covered for holding the subject matters covered**TaxCharged: Sub root element for an individual subject matter covered**

SubjectMatterReference	String(50)	Mandatory	Subject matter covered reference number assigned by insurer
SubjectMatterDesc	String(250)	Mandatory	Subject matter covered description

CoverNoteAddons: Sub root element for the Cover Note Addons for holding the Cover Note Addons

CoverNoteAddon: Sub root element for an individual Cover Note Addon

AddonReference	String(50)	Mandatory	Add-on reference number assigned by Insurer
AddonDesc	String(250)	Mandatory	Add-on description
AddonAmount	Numeric(36,2)	Mandatory	Add-on insured amount
AddonPremiumRate	Numeric(36,2)	Mandatory	Add-on charged premium rate
PremiumEquivalentAmount	Numeric(36,2)	Mandatory	Add-on equivalent amount
PremiumExcludingTax	Numeric(36,2)	Mandatory	Add-on charged premium excluding taxes
PremiumIncludingTax	Numeric(36,2)	Mandatory	Add-on charged premium including taxes

PolicyHolders: Sub root element for Policyholders for holding the Policyholders

PolicyHolder: Sub root element for an individual Policyholder

PolicyHolderName	String(100)	Mandatory	Policyholder name
PolicyHolderBirthDate	Date	Mandatory	Policyholder Birth Date
PolicyHolderType	Numeric(1)	Mandatory	Policyholder Type values are: 1. For Individual 2. For Cooperate
PolicyHolderIdNumber	String(50)	Mandatory	Policyholder Identification Number
PolicyHolderIdType	Number(1)	Mandatory	Policyholder Identification type: 1. National Identification Number (NIN) 2. Voters registration number

			3. Passport number
Gender	String(1)	Mandatory for individual and optional for cooperate entity	Policyholder gender: F – Female M – Male
CountryCode	String(3)	Mandatory	Policyholder ISO 3166 international standard country codes (alpha-3)
Region	String(50)	Mandatory	Policyholder Tanzania region code to be given by TIRA
District	String(50)	Mandatory	Policyholder Tanzania District code to be given by TIRA
Street	String(50)	Mandatory	Policyholder street name
PolicyHolderPhoneNumber	String(50)	Mandatory	Policyholder registered phone number
PolicyHolderFax	String(50)	Optional	Policyholder Fax
PostalAddress	String(50)	Optional	Policyholder Postal address
EmailAddress	String(100)	Optional	Policyholder email address
MotorDtl: Motor details header information			
MotorCategory	Numeric(1)	Mandatory	Motor category: 1 – Motor vehicle 2 – Motor cycle
RegistrationNumber	String(50)	Mandatory/Optional	Registration number
ChassisNumber	String(50)	Mandatory	Chassis number
Make	String(100)	Mandatory	Make
Model	String(100)	Mandatory	Model
ModelNumber	String(100)	Mandatory	model number
BodyType	String(100)	Mandatory	Body Type

Color	String(100)	Mandatory	Color
EngineNumber	String(100)	Mandatory	engine Number
EngineCapacity	String(100)	Mandatory	Engine Capacity
FuelUsed	String(100)	Mandatory	fuel used
NumberOfAxles	Numeric(2)	Mandatory/Optional	Number of Axles
AxleDistance	Numeric(2)	Mandatory/Optional	Axle distance
SittingCapacity	Numeric(3)	Mandatory/Optional	Sitting Capacity
YearOfManufacture	Numeric(4)	Mandatory	Year of manufacture
TareWeight	Numeric(4)	Mandatory	Tare weight
GrossWeight	Numeric(4)	Mandatory	Gross weight
MotorUsage	String(100)	Mandatory/Optional	Motor usage
OwnerName	String(100)	Mandatory	Motor Owner name
OwnerCategory	Numeric(1)	Mandatory	Motor owner category: 1 – Sole proprietor 2 - Corporate
OwnerAddress	String(100)	Mandatory/Optional	Motor owner address

9. NATIONAL IDENTIFICATION NUMBER (NIN) VERIFICATION

9.1 NIN verification Submission Request - *NINVerificationReq*

```

<TiraMsg>
  <NINVerificationReq>
    <VerificationHdr>
      <RequestId>NIC22424232355</RequestId>
      <CompanyCode>IC0003</CompanyCode>
      <SystemCode>SYS0003</SystemCode>
    </VerificationHdr>
    <VerificationDtl>
      <NationalIdentificationNumber>4242424</NationalIdentificationNumber>
    </VerificationDtl>
  </NINVerificationReq>
<MsgSignature>figuiiojwjfuuehgrhgherheihfeghehefwuifwnihfergiengi</MsgSignature>
</TiraMsg>

```

Tag Name	Data Type	Condition	Tag Definition
NINVerificationReq: NIN verification data submission request sub root element			

VerificationHdr: NIN verification data header details sub root element			
RequestId	String(50)	Mandatory	Unique identification assigned by insurer for each request
CompanyCode	String(6)	Mandatory	TIRA assigned identification for the System owner submitting data to TIRAMIS
SystemCode	String(12)	Mandatory	System identification assigned by TIRA to the system submitting data
VerificationDtl: NIN verification details Sub root element			
NationalIdentificationNumber	String(50)	Mandatory	National Identification Number (NIN)

9.2 NIN verification response - *NINVerificationRes*

```

<TiraMsg>
  <NINVerificationRes>
    <VerificationHdr>
      <ResponseId>TIRA22424232355</ResponseId>
      <RequestId>NIC22424232355</RequestId>
      <ResponseStatusCode>TIRA001</ResponseStatusCode>
      <ResponseStatusDesc>Successful</ResponseStatusDesc>
    </VerificationHdr>
    <VerificationDtl>
      <!-- To be added later -->
    </VerificationDtl>
  </NINVerificationRes>
<MsgSignature>figuiiojwjfuuehgrhhfegheheiofwhefioewiofhiwhfiowhfi</MsgSignature>
</TiraMsg>

```

Tag Name	Data Type	Condition	Tag Definition
NINVerificationRes: NIN response sub root element			
VerificationHdr: NIN response header details sub root element			
ResponseId	String(50)	Mandatory	TIRAMIS response ID
RequestId	String(50)	Mandatory	Insurer request ID
ResponseStatusCode	String(7)	Mandatory	Response status code
ResponseStatusDesc	String(100)	Mandatory	Response status description

VerificationDtl: Sub root element for NIN response details

To be added later

10. COMPANY VERIFICATION

10.1 Company verification Submission Request - *CompanyVerificationReq*

```

<TiraMsg>
  <CompanyVerificationReq>
    <VerificationHdr>
      <RequestId>NIC22424232355</RequestId>
      <CompanyCode>IC0003</CompanyCode>
      <SystemCode>SYS0003</SystemCode>
    </VerificationHdr>
    <VerificationDtl>
<IncorporationCertificateNumber>4242424</IncorporationCertificateNumber>
    </VerificationDtl>
  </CompanyVerificationReq>
<MsgSignature>figuiiojwjfuuehgrhgherheihfeghehefefewbfwiufwnihfergiengi</MsgSignature>
</TiraMsg>
  
```

Tag Name	Data Type	Condition	Tag Definition
CompanyVerificationReq: Company verification data submission request sub root element			
VerificationHdr: Company verification data header details sub root element			
RequestId	String(50)	Mandatory	Unique identification assigned by insurer for each request
CompanyCode	String(6)	Mandatory	TIRA assigned identification for the System owner submitting data to TIRAMIS
SystemCode	String(12)	Mandatory	System identification assigned by TIRA to the system submitting data
VerificationDtl: Company verification details Sub root element			

IncorporationCertificateNumber	String(50)	Mandatory	Company Incorporation Certification number
---------------------------------------	------------	-----------	--

10.2 Company verification response - *CompanyVerificationRes*

```

<TiraMsg>
  <CompanyVerificationRes>
    <VerificationHdr>
      <ResponseId>TIRA22424232355</ResponseId>
      <RequestId>NIC22424232355</RequestId>
      <ResponseStatusCode>TIRA001</ResponseStatusCode>
      <ResponseStatusDesc>Successful</ResponseStatusDesc>
    </VerificationHdr>
    <VerificationDtl>
<IncorporationCertificateNumber>4242424</IncorporationCertificateNumber>
      <CompanyName>4242424</CompanyName>
      <!-- //
      //
      //
      // -->
    </VerificationDtl>
  </CompanyVerificationRes>
<MsgSignature>figuiojwjfuuehgrhgherheihfegheheiofwhefioewiofhiwhfiowhfi</MsgSignature>
</TiraMsg>

```

Tag Name	Data Type	Condition	Tag Definition
CompanyVerificationRes: Company verification response sub root element			
VerificationHdr:- Company verification response header details sub root element			
ResponseId	String(50)	Mandatory	TIRAMIS response ID
RequestId	String(50)	Mandatory	Insurer request ID
ResponseStatusCode	String(7)	Mandatory	Response status code
ResponseStatusDesc	String(100)	Mandatory	Response status description
VerificationDtl			Sub root element for company verification response details
To be added later			

11. MOTOR VERIFICATION

11.1 Motor verification Submission Request - *MotorVerificationReq*

```

<TiraMsg>
  <MotorVerificationReq>
    <VerificationHdr>
      <RequestId>NIC22424232355</RequestId>
      <CompanyCode>IC0003</CompanyCode>
      <SystemCode>SYS0003</SystemCode>
    </VerificationHdr>
    <VerificationDtl>
      <MotorCategory>1</MotorCategory>
      <MotorRegistrationNumber>T233SQA</MotorRegistrationNumber>
      <MotorChassisNumber>4353646</MotorChassisNumber>
    </VerificationDtl>
  </MotorVerificationReq>

<MsgSignature>figuiiojwjfuuehgrhgherheihfeghehefefewbfwiufwnihfergiengi</MsgSignature>
</TiraMsg>

```

Tag Name	Data Type	Condition	Tag Definition
MotorVerificationReq: Motor verification data submission request sub root element			
VerificationHdr: Motor verification data header details sub root element			
RequestId	String(50)	Mandatory	Unique identification assigned by insurer for each request
CompanyCode	String(6)	Mandatory	TIRA assigned identification for the System owner submitting data to TIRAMIS
SystemCode	String(12)	Mandatory	System identification assigned by TIRA to the system submitting data
VerificationDtl: Motor verification details Sub root element			
MotorCategory	Numeric(1)	Mandatory	Motor category: 1 – Motor vehicle 2 – Motor cycle
MotorRegistrationNumber	String(50)	Optional/Mandatory	Motor registration number
MotorChassisNumber	String(50)	Optional/Mandatory	Motor chassis number

11.2 Motor verification response - *MotorVerificationRes*

```

<TiraMsg>
  <MotorVerificationRes>
    <VerificationHdr>
      <ResponseId>TIRA22424232355</ResponseId>
      <RequestId>NIC22424232355</RequestId>
      <ResponseStatusCode>TIRA001</ResponseStatusCode>
      <ResponseStatusDesc>Successful</ResponseStatusDesc>
    </VerificationHdr>
    <VerificationDtl>
      <MotorCategory>1</MotorCategory>
      <RegistrationNumber>T241QWA</RegistrationNumber>
      <ChassisNumber>NCP314345436334</ChassisNumber>
      <Make>Toyota</Make>
      <Model>IST</Model>
      <ModelNumber>TA232353455</ModelNumber>
      <BodyType>Station Wagon</BodyType>
      <Color>Blue</Color>
      <EngineNumber>2423253535</EngineNumber>
      <EngineCapacity>2300</EngineCapacity>
      <FuelUsed>Petrol</FuelUsed>
      <NumberOfAxles>3</NumberOfAxles>
      <AxleDistance></AxleDistance>
      <SittingCapacity></SittingCapacity>
      <YearOfManufacture>2001</YearOfManufacture>
      <TareWeight>2000</TareWeight>
      <GrossWeight>2000</GrossWeight>
      <MotorUsage>Private</MotorUsage>
      <OwnerName>Juma Wamugamba</OwnerName>
      <OwnerCategory>1</OwnerCategory>
    </VerificationDtl>
  </CompanyVerificationRes>
<MsgSignature>figuiiojwjfuuehgrhgherheihfegheheiofwhefioewiofhiwhfiowhfi</MsgSignature>
</TiraMsg>

```

Tag Name	Data Type	Condition	Tag Definition
MotorVerificationRes: Motor verification response sub root element			
VerificationHdr: Motor verification response header details sub root element			
ResponseId	String(50)	Mandatory	TIRAMIS response ID
RequestId	String(50)	Mandatory	Insurer request ID
ResponseStatusCode	String(7)	Mandatory	Response status code
ResponseStatusDesc	String(100)	Mandatory	Response status description
VerificationDtl: Sub root element for motor verification response details			
MotorCategory	Numeric(1)	Mandatory	A1Motor category:

			1 – Motor vehicle 2 – Motor cycle
RegistrationNumber	String(50)	Mandatory/Optional	Registration number
ChassisNumber	String(50)	Mandatory	Chassis number
Make	String(100)	Mandatory	Make
Model	String(100)	Mandatory	Model
ModelNumber	String(100)	Mandatory	model number
BodyType	String(100)	Mandatory	Body Type
Color	String(100)	Mandatory	Color
EngineNumber	String(100)	Mandatory	engine Number
EngineCapacity	String(100)	Mandatory	Engine Capacity
FuelUsed	String(100)	Mandatory	fuel used
NumberOfAxles	Numeric(2)	Mandatory/Optional	Number of Axles
AxleDistance	Numeric(2)	Mandatory/Optional	Axle distance
SittingCapacity	Numeric(3)	Mandatory/Optional	Sitting Capacity
YearOfManufacture	Numeric(4)	Mandatory	Year of manufacture
TareWeight	Numeric(4)	Mandatory	Tare weight
GrossWeight	Numeric(4)	Mandatory	Gross weight
MotorUsage	String(100)	Mandatory/Optional	Motor usage
OwnerName	String(100)	Mandatory	Motor Owner name
OwnerCategory	Numeric(1)	Mandatory	Motor owner category: 1 – Sole proprietor 2 - Corporate

12. CLAIM NOTIFICATION SUBMISSION

12.1 Claim Notification Submission Request - *ClaimNotificationRefReq*

```

<TiraMsg>
  <ClaimNotificationRefReq>
    <ClaimNotificationHdr>
      <RequestId>NIC22424232355</RequestId>
      <CompanyCode>IC0003</CompanyCode>
      <SystemCode>SYS0003</SystemCode>
      <CallBackUrl>http://nic.co.tz/api/CoverNoteref/response</CallBackUrl>
      <InsurerCompanyCode>IC001</InsurerCompanyCode>
    
```

```

    <TranCompanyCode>IC001</TranCompanyCode>
  </ClaimNotificationHdr>
  <ClaimNotificationDtl>
    <ClaimNotificationNumber>NIC00004</ClaimNotificationNumber>
    <CoverNoteReferenceNumber>3252-5252</CoverNoteReferenceNumber>
    <ClaimReportDate>2020-09-15T13:55:22</ClaimReportDate>
    <ClaimFormDullyFilled>Y</ClaimFormDullyFilled>
    <LossDate>2020-09-15T13:55:22</LossDate>
    <LossNature>Fire and Allied Perils</LossNature>
    <LossType>Bodily Injury</LossType>
    <LossLocation>Morogoro</LossLocation>
    <OfficerName>John Doe</OfficerName>
    <OfficerTitle>Underwriter</OfficerTitle>
  </ClaimNotificationDtl>
</ClaimNotificationRefReq>
<MsgSignature>figuiiojwjfuuehgrhgherheihfegheheiofwhefioewiofhiwhfiowhfi</MsgSignature>
</TiraMsg>

```

Tag Name	Data Type	Condition	Tag Definition
ClaimNotificationRefReq: Claim notification reference number data submission request sub root element			
ClaimNotificationHdr: Claim notification data header details sub root element			
RequestId	String(50)	Mandatory	Unique identification assigned by insurer for each request
CompanyCode	String(6)	Mandatory	TIRA assigned identification for the System owner submitting data to TIRAMIS
SystemCode	String(12)	Mandatory	System identification assigned by TIRA to the system submitting data
CallbackUrl	String(250)	Mandatory	A callback URL for asynchronous processing in order to be notified on the final response of the request
InsurerCompanyCode	String(6)	Mandatory	Insurer code to be given by TIRA
TranCompanyCode	String(6)	Mandatory	Identification code of the entity which did sale the submitted Cover Note details. It is given by TIRA
ClaimNotificationDtl: Claim notification details Sub root element			
ClaimNotificationNumber	String(50)	Mandatory	Claim notification number as per Insurer
CoverNoteReferenceNumber	String(50)	Mandatory	Cover Note reference number

ClaimReportDate	DateTime	Mandatory	Claim report date and time as per YYYY-MM-DD'T'HH:MM:SS eng (2022-08-29T23:59:59) format
ClaimFormDullyFilled	String(1)	Mandatory	If filled claim form is submitted or Not. Y – Yes N – No
LossNature	String(100)	Mandatory	Nature of loss
LossType	String(100)	Mandatory	Type of loss
LossLocation	String(100)	Mandatory	Location of loss
OfficerName	String(100)	Mandatory	Name of authorizing officer
OfficerTitle	String(100)	Mandatory	Title of authorizing officer

12.2 Claim Notification Data Submission Request Acknowledgement – *ClaimNotificationRefReqAck*

```

<TiraMsg>
  <ClaimNotificationRefReqAck>
    <AcknowledgementId>TIRA22424232355</AcknowledgementId>
    <RequestId>NIC22424232355</RequestId>
    <AcknowledgementStatusCode>TIRA003</AcknowledgementStatusCode>
    <AcknowledgementStatusDesc>Received</AcknowledgementStatusDesc>
  </ClaimNotificationRefReqAck>
  <MsgSignature>btrhrtigrono irengoienfionewif</MsgSignature>
</TiraMsg>

```

Tag	Data Type	Tag definition
ClaimNotificationRefReqAck		Claim notification submission request acknowledgment Header Information
AcknowledgementId	String(50)	Claim notification submission Request acknowledgment ID assigned by TIRA on a respective request from Insurer system
RequestId	String(50)	Insurer Request ID
AcknowledgementStatusCode	String(7)	Acknowledgement status code
AcknowledgementStatusDesc	String(100)	Acknowledgement status description

12.3 Claim Notification Data Submission Request Final Response – **ClaimNotificationRefRes**

```

<TiraMsg>
  <ClaimNotificationRefRes>
    <ResponseId>TIRA22424232355</ResponseId>
    <RequestId>NIC22424232355</RequestId>
    <ClaimReferenceNumber>3325253254</ClaimReferenceNumber>
    <ResponseStatusCode>TIRA001</ResponseStatusCode>
    <ResponseStatusDesc>Successful</ResponseStatusDesc>
  </ClaimNotificationRefRes>
  <MsgSignature>btrhrtigronoirengoienfionewif</MsgSignature>
</TiraMsg>

```

Tag	Data Type	Condition	Tag definition
ClaimNotificationRefRes			Claim notification data submission request final response header information
ResponseId	String(50)	Mandatory	TIRAMIS response ID
RequestId	String(50)	Mandatory	Insurer request ID
ClaimReferenceNumber	String(50)		Claim reference number
ResponseStatusCode	String(7)		Response status code
ResponseStatusDesc	String(100)		Response status description

12.4 Claim Notification Data Submission Request Final Response Acknowledgement - **ClaimNotificationRefResAck**

```

<TiraMsg>
  <ClaimNotificationRefResAck>
    <AcknowledgementId>NIC22424232355</AcknowledgementId>
    <ResponseId>TIRA22424232355</ResponseId>
    <AcknowledgementStatusCode>TIRA001</AcknowledgementStatusCode>
    <AcknowledgementStatusDesc>Successful</AcknowledgementStatusDesc>
  </ClaimNotificationRefResAck>
  <MsgSignature>btrhrtigronoirengoienfionewif</MsgSignature>
</TiraMsg>

```

Tag	Data Type	Tag definition
ClaimNotificationRefResAck		Claim notification data submission request response acknowledgment Header Information
AcknowledgementId	String(50)	Claim notification data submission Response acknowledgement ID

		assigned by INSURER on a respective response from TIRAMIS system
ResponseId	String(50)	TIRAMIS Response ID
AcknowledgementStatusCode	String(7)	Acknowledgement status code
AcknowledgementStatusDesc	String(100)	Acknowledgement status description

13. CLAIM INTIMATION SUBMISSION

13.1 Claim Intimation Submission Request – *ClaimIntimationReq*

```

<TiraMsg>
  <ClaimIntimationReq>
    <ClaimIntimationHdr>
      <RequestId>AB3232532523344</RequestId>
      <CompanyCode>IC100</CompanyCode>
      <SystemCode>SYS001</SystemCode>
      <CallBackUrl>http://nic.co.tz/api/CoverNoteref/response</CallBackUrl>
      <InsurerCompanyCode>IC100</InsurerCompanyCode>
    </ClaimIntimationHdr>
    <ClaimIntimationDtl>
      <ClaimIntimationNumber>322WQ25234234</ClaimIntimationNumber>
      <ClaimReferenceNumber>10020-25400-07720</ClaimReferenceNumber>
      <CoverNoteReferenceNumber>10020-25400-07720</CoverNoteReferenceNumber>
      <ClaimIntimationDate>2020-09-10T13:55:22</ClaimIntimationDate>
      <CurrencyCode>USD</CurrencyCode>
      <ExchangeRate>2000.00</ExchangeRate>
      <ClaimEstimatedAmount>2000000.00</ClaimEstimatedAmount>
      <ClaimReserveAmount>1000000.00</ClaimReserveAmount>
      <ClaimReserveMethod>Chain Ladder</ClaimReserveMethod>
      <LossAssessmentOption>1</LossAssessmentOption>
      <AssessorName>Baraka Kiswigu</AssessorName>
      <AssessorIdNumber>124214114</AssessorIdNumber>
      <AssessorIdType>1</AssessorIdType>
      <Claimants>
        <Claimant>
          <ClaimantName>Augustino Aidan Mwageni</ClaimantName>
          <ClaimantBirthDate>1920-02-05</ClaimantBirthDate>
          <ClaimantCategory>2</ClaimantCategory>
          <ClaimantType>1</ClaimantType>
          <ClaimantIdNumber>24241241</ClaimantIdNumber>
          <ClaimantIdType>1</ClaimantIdType>
          <Gender></Gender>
          <CountryCode>TZA</CountryCode>
          <Region>Region</Region>
          <District>Ilala</District>
          <Street></Street>
          <ClaimantPhoneNumber>255713525539</ClaimantPhoneNumber>
          <ClaimantFax></ClaimantFax>
          <PostalAddress></PostalAddress>
          <EmailAddress></EmailAddress>
        </Claimant>
        <Claimant>
          <ClaimantName>KISWIGU Company Ltd</ClaimantName>
          <ClaimantBirthDate>1950-02-05</ClaimantBirthDate>

```

```

    <ClaimantCategory>2</ClaimantCategory>
    <ClaimantType>2</ClaimantType>
    <ClaimantIdNumber>3452525235525</ClaimantIdNumber>
    <ClaimantIdType>3</ClaimantIdType>
    <Gender></Gender>
    <CountryCode>TZA</CountryCode>
    <Region>Region</Region>
    <District>Ilala</District>
    <Street></Street>
    <ClaimantPhoneNumber>255713525539</ClaimantPhoneNumber>
    <ClaimantFax></ClaimantFax>
    <PostalAddress></PostalAddress>
    <EmailAddress></EmailAddress>
  </Claimant>
</Claimants>
</ClaimIntimationDtl>
</ClaimIntimationReq>

```

```

<MsgSignature>figuiiojwjfuuehgrhgherheihfegheheiofwhefioewiofhiwhfiowhfi</MsgSignature>
</TiraMsg>

```

Tag Name	Data Type	Condition	Tag Definition
ClaimIntimationReq: Claim intimation data submission request sub root element			
ClaimIntimationHdr: Claim intimation data header details sub root element			
RequestId	String(50)	Mandatory	Unique identification assigned by insurer for each request
CompanyCode	String(6)	Mandatory	TIRA assigned identification for the System owner submitting data to TIRAMIS
SystemCode	String(12)	Mandatory	System identification assigned by TIRA to the system submitting data
CallBackUrl	String(250)	Mandatory	A callback URL for asynchronous processing in order to be notified on the final response of the request
InsurerCompanyCode	String(6)	Mandatory	Insurer code to be given by TIRA
ClaimIntimationDtl: Claim intimation details Sub root element			
ClaimIntimationNumber	String(50)	Mandatory	Claim intimation number
ClaimReferenceNumber	String(50)	Mandatory	Claim reference number

CoverNoteReferenceNumber	String(50)	Mandatory	Cover Note reference number
ClaimIntimationDate	DateTime	Mandatory	Claim intimation date and time as per YYYY-MM-DD'T'HH:MM:SS eng (2022-08-29T23:59:59) format
ClaimEstimatedAmount	Numeric(36,2)	Mandatory	Claim estimated amount
ClaimReserveAmount	Numeric(36,2)	Mandatory	Claim reserve amount
CurrencyCode	String(3)	Mandatory	ISO 4217 currency code
ExchangeRate	Numeric(36,2)	Mandatory	Exchange rate
ClaimReserveMethod	String(100)	Mandatory	Claim reserve method
LossAssessmentOption	Number(1)	Mandatory	Loss assessment option 1. In-house - Insurer employee External - Registered insurance adjuster
AssessorName	String(100)	Mandatory	Name of assessor
AssessorIdNumber	String(50)	Mandatory	Assessor identification number
AssessorIdType	Number(1)	Mandatory	Assessor identification number type 1. National Identification Number (NIN) 2. Voters registration number 3. Passport number
Claimants: Claimants details Sub root element			
Claimant: Claimant details Sub root element			
ClaimantName	String(100)	Mandatory/Optional	Claimant name
ClaimantBirthDate	Date	Mandatory/Optional	Claimant birth date
ClaimantCategory	Number(1)	Mandatory/Optional	Claimant category: 1. Policyholder 2. Third Party
ClaimantType	Number(1)	Mandatory/Optional	Claimant type: 1. Individual

			2. Corporate
ClaimantIdNumber	String(50)	Mandatory/Optional	Claimant Identification Number
ClaimantIdType	Number(1)	Mandatory/Optional	Claimant Identification type: 1. National Identification Number (NIN) 2. Voters registration number 3. Passport number
Gender	String(1)	Mandatory/Optional	Claimant gender: F – Female M – Male
CountryCode	String(3)	Mandatory	Claimant ISO 3166 international standard country codes (alpha-3)
District	String(100)	Mandatory	Claimant district
Street	String(100)	Optional	Claimant street
ClaimantPhoneNumber	String(50)	Mandatory	Claimant registered phone number
ClaimantFax	String(50)	Optional	Claimant facsimile number
PostalAddress	String(50)	Optional	Claimant postal address
EmailAddress	String(50)	Optional	Claimant email address

13.2 Claim Intimation Data Submission Request Acknowledgement – *ClaimIntimationReqAck*

```

<TiraMsg>
  <ClaimIntimationReqAck>
    <AcknowledgementId>TIRA22424232355</AcknowledgementId>
    <RequestId>NIC22424232355</RequestId>
    <AcknowledgementStatusCode>TIRA003</AcknowledgementStatusCode>
    <AcknowledgementStatusDesc>Received</AcknowledgementStatusDesc>
  </ClaimIntimationReqAck>
  <MsgSignature>btrhrtigrono irengoienfionewif</MsgSignature>
</TiraMs

```

Tag	Data Type	Tag definition
-----	-----------	----------------

ClaimIntimationReqAck		Claim intimation data submission request acknowledgment Header Information
AcknowledgementId	String(50)	Claim intimation data submission Request acknowledgement ID assigned by TIRA on a respective request from Insurer system
RequestId	String(50)	Insurer Request ID
AcknowledgementStatusCode	String(7)	Acknowledgement status code
AcknowledgementStatusDesc	String(100)	Acknowledgement status description

13.3 Claim Intimation Data Submission Request Final Response – *ClaimIntimationRes*

```

<TiraMsg>
  <ClaimIntimationRes>
    <ResponseId>TIRA22424232355</ResponseId>
    <RequestId>NIC22424232355</RequestId>
    <ResponseStatusCode>TIRA001</ResponseStatusCode>
    <ResponseStatusDesc>Successful</ResponseStatusDesc>
  </ClaimIntimationRes>
  <MsgSignature>btrhrtigronoirengoienfionewif</MsgSignature>
</TiraMsg>

```

Tag	Data Type	Condition	Tag definition
ClaimIntimationRes			Claim intimation data submission request final response header information
ResponseId	String(50)	Mandatory	TIRAMIS response ID
RequestId	String(50)	Mandatory	Insurer request ID
ResponseStatusCode	String(7)		Response status code
ResponseStatusDesc	String(100)		Response status description

13.4 Claim Intimation Data Submission Request Final Response Acknowledgement - *ClaimIntimationResAck*

```

<TiraMsg>
  <ClaimIntimationResAck>
    <AcknowledgementId>NIC22424232355</AcknowledgementId>
    <ResponseId>TIRA22424232355</ResponseId>
    <AcknowledgementStatusCode>TIRA001</AcknowledgementStatusCode>
    <AcknowledgementStatusDesc>Successful</AcknowledgementStatusDesc>
  </ClaimIntimationResAck>
  <MsgSignature>btrhrtigronoirengoienfionewif</MsgSignature>

```

</TiraMsg>

Tag	Data Type	Tag definition
ClaimIntimationResAck		Claim intimation data submission request response acknowledgment Header Information
AcknowledgementId	String(50)	Claim intimation data submission Response acknowledgement ID assigned by INSURER on a respective response from TIRAMIS system
ResponseId	String(50)	TIRAMIS Response ID
AcknowledgementStatusCode	String(7)	Acknowledgement status code
AcknowledgementStatusDesc	String(100)	Acknowledgement status description

14. CLAIM ASSESSMENT DATA SUBMISSION

14.1 Claim Assessment Submission Request – *ClaimAssessmentReq*

```
<TiraMsg>
  <ClaimAssessmentReq>
    <ClaimAssessmentHdr>
      <RequestId>AB3232532523344</RequestId>
      <CompanyCode>IC100</CompanyCode>
      <SystemCode>SYS001</SystemCode>
      <CallBackUrl>http://nic.co.tz/api/CoverNoteref/response</CallBackUrl>
      <InsurerCompanyCode>IC100</InsurerCompanyCode>
    </ClaimAssessmentHdr>
    <ClaimAssessmentDtl>
      <ClaimAssessmentNumber>322WQ25234234</ClaimAssessmentNumber>
      <ClaimIntimationNumber>35234234</ClaimIntimationNumber>
      <ClaimReferenceNumber>10020-25400-07720</ClaimReferenceNumber>
      <CoverNoteReferenceNumber>10020-25400-
07720</CoverNoteReferenceNumber>
      <AssessmentReceivedDate>2020-09-10T13:55:22</AssessmentReceivedDate>
      <AssessmentReportSummary>rgegerufuiwiuefuiqwgquqifi</AssessmentReportSummary>
      <CurrencyCode>USD</CurrencyCode>
      <ExchangeRate>2000.00</ExchangeRate>
      <AssessmentAmount>20000.00</AssessmentAmount>
      <ApprovedClaimAmount>20000.00</ApprovedClaimAmount>
      <ClaimApprovalDate>2020-09-10T13:55:22</ClaimApprovalDate>
      <ClaimApprovalAuthority>CEO</ClaimApprovalAuthority>
      <IsReAssessment>Y</IsReAssessment>
      <Claimants>
        <Claimant>
          <ClaimantCategory>2</ClaimantCategory>
          <ClaimantType>1</ClaimantType>
          <ClaimantIdNumber>24241241</ClaimantIdNumber>
          <ClaimantIdType>1</ClaimantIdType>
        </Claimant>
      </Claimants>
    </ClaimAssessmentDtl>
  </ClaimAssessmentReq>
</TiraMsg>
```

```

        </Claimant>
    </Claimant>
        <ClaimantCategory>2</ClaimantCategory>
        <ClaimantType>2</ClaimantType>
        <ClaimantIdNumber>3452525235525</ClaimantIdNumber>
        <ClaimantIdType>3</ClaimantIdType>
    </Claimant>
</Claimants>
</ClaimAssessmentDtl>
</ClaimAssessmentReq>
<MsgSignature>figuiiojwjfuuehgrhgherheihfegheheiofwhefioewiofhiwhfiowhfi</MsgSignature>
</TiraMsg>

```

Tag Name	Data Type	Condition	Tag Definition
ClaimAssessmentReq: Claim assessment data submission request sub root element			
ClaimAssessmentHdr: Claim assessment data header details sub root element			
RequestId	String(50)	Mandatory	Unique identification assigned by insurer for each request
CompanyCode	String(6)	Mandatory	TIRA assigned identification for the System owner submitting data to TIRAMIS
SystemCode	String(12)	Mandatory	System identification assigned by TIRA to the system submitting data
CallbackUrl	String(250)	Mandatory	A callback URL for asynchronous processing in order to be notified on the final response of the request
InsurerCompanyCode	String(6)	Mandatory	Insurer code to be given by TIRA
ClaimAssessmentDtl: Claim assessment details Sub root element			
ClaimAssessmentNumber	String(50)	Mandatory	Claim assessment number
ClaimIntimationNumber	String(50)	Mandatory	Claim intimation number
ClaimReferenceNumber	String(50)	Mandatory	Claim reference number
CoverNoteReferenceNumber	String(50)	Mandatory	Cover Note reference number
AssessmentReceivedDate	DateTime	Mandatory	Assessment received date and time as per YYYY-MM-DD'T'HH:MM:SS eng (2022-08-29T23:59:59) format

AssessmentReportSummary	String(1000)	Mandatory	Assessment report summary
CurrencyCode	String(3)	Mandatory	ISO 4217 currency code
ExchangeRate	Numeric(36,2)	Mandatory	Exchange rate
AssessmentAmount	Numeric(36,2)	Mandatory	Assessment amount
ApprovedClaimAmount	Numeric(36,2)	Mandatory	Approved claim amount
ClaimApprovalDate	DateTime	Mandatory	Assessment received date and time as per YYYY-MM-DD'T'HH:MM:SS eng (2022-08-29T23:59:59) format
ClaimApprovalAuthority	String(100)	Mandatory	Claim approval authority
IsReAssessment	String(1)	Mandatory	Is this reassessment: Y – Yes N – No
Claimants:- Claimants details Sub root element			
Claimant:- Claimant details Sub root element			
ClaimantCategory	Number(1)	Mandatory/Optional	Claimant category: 1. Policyholder 2. Third Party
ClaimantType	Number(1)	Mandatory/Optional	Claimant type: 1. Individual 2. Corporate
ClaimantIdNumber	String(50)	Mandatory/Optional	Claimant Identification Number
ClaimantIdType	Number(1)	Mandatory/Optional	Claimant Identification type: 1. National Identification Number (NIN) 2. Voters registration number 3. Passport number

14.2 Claim Assessment Data Submission Request Acknowledgement – *ClaimAssessmentReqAck*

```

<TiraMsg>
  <ClaimAssessmentReqAck>
    <AcknowledgementId>TIRA22424232355</AcknowledgementId>
    <RequestId>NIC22424232355</RequestId>
    <AcknowledgementStatusCode>TIRA003</AcknowledgementStatusCode>
    <AcknowledgementStatusDesc>Received</AcknowledgementStatusDesc>
  </ClaimAssessmentReqAck>
  <MsgSignature>btrhrtigronoirengoienfionewif</MsgSignature>
</TiraMsg>

```

Tag	Data Type	Tag definition
ClaimAssessmentReqAck		Claim assessment data submission request acknowledgment Header Information
AcknowledgementId	String(50)	Claim assessment data submission Request acknowledgement ID assigned by TIRA on a respective request from Insurer system
RequestId	String(50)	Insurer Request ID
AcknowledgementStatusCode	String(7)	Acknowledgement status code
AcknowledgementStatusDesc	String(100)	Acknowledgement status description

14.3 Claim Assessment Data Submission Request Final Response – *ClaimAssessmentRes*

```

<TiraMsg>
  <ClaimAssessmentRes>
    <ResponseId>TIRA22424232355</ResponseId>
    <RequestId>NIC22424232355</RequestId>
    <ResponseStatusCode>TIRA001</ResponseStatusCode>
    <ResponseStatusDesc>Successful</ResponseStatusDesc>
  </ClaimAssessmentRes>
  <MsgSignature>btrhrtigronoirengoienfionewif</MsgSignature>
</TiraMsg>

```

Tag	Data Type	Condition	Tag definition
ClaimAssessmentRes			Claim assessment data submission request final response header information
ResponseId	String(50)	Mandatory	TIRAMIS response ID
RequestId	String(50)	Mandatory	Insurer request ID

ResponseStatusCode	String(7)		Response status code
ResponseStatusDesc	String(100)		Response status description

14.4 Claim Intimation Data Submission Request Final Response Acknowledgement - *ClaimAssessmentResAck*

```

<TiraMsg>
  <ClaimAssessmentResAck>
    <AcknowledgementId>NIC22424232355</AcknowledgementId>
    <ResponseId>TIRA22424232355</ResponseId>
    <AcknowledgementStatusCode>TIRA001</AcknowledgementStatusCode>
    <AcknowledgementStatusDesc>Successful</AcknowledgementStatusDesc>
  </ClaimAssessmentResAck>
  <MsgSignature>btrhrtigronoirengoienfionewif</MsgSignature>
</TiraMsg>

```

Tag	Data Type	Tag definition
ClaimAssessmentResAck		Claim assessment data submission request response acknowledgment Header Information
AcknowledgementId	String(50)	Claim assessment data submission Response acknowledgement ID assigned by INSURER on a respective response from TIRAMIS system
ResponseId	String(50)	TIRAMIS Response ID
AcknowledgementStatusCode	String(7)	Acknowledgement status code
AcknowledgementStatusDesc	String(100)	Acknowledgement status description

15. DISCHARGE VOUCHER DATA SUBMISSION

15.1 Discharge Voucher Submission Request – *DischargeVoucherReq*

```

<TiraMsg>
  <DischargeVoucherReq>
    <DischargeVoucherHdr>
      <RequestId>AB3232532523344</RequestId>
      <CompanyCode>IC100</CompanyCode>
      <SystemCode>SYS001</SystemCode>
      <CallBackUrl>http://nic.co.tz/api/CoverNoteref/response</CallBackUrl>
      <InsurerCompanyCode>IC100</InsurerCompanyCode>
    </DischargeVoucherHdr>
    <DischargeVoucherDtl>
      <DischargeVoucherNumber>322WQ25234234</DischargeVoucherNumber>
    </DischargeVoucherDtl>
  </DischargeVoucherReq>
</TiraMsg>

```

```

    <ClaimAssessmentNumber>322WQ252323423q4</ClaimAssessmentNumber>
    <ClaimReferenceNumber>10020-25400-07720</ClaimReferenceNumber>
    <CoverNoteReferenceNumber>10020-25400-
07720</CoverNoteReferenceNumber>
    <DischargeVoucherDate>2020-09-10T13:55:22</DischargeVoucherDate>
    <CurrencyCode>USD</CurrencyCode>
    <ExchangeRate>2000.00</ExchangeRate>
    <ClaimOfferCommunicationDate>2020-09-
10T13:55:22</ClaimOfferCommunicationDate>
    <ClaimOfferAmount>5000000</ClaimOfferAmount>
    <ClaimantResponseDate>2020-09-10T13:55:22</ClaimantResponseDate>
    <AdjustmentDate>2020-09-10T13:55:22</AdjustmentDate>
    <AdjustmentReason>vhrefhrehfohfiwhei</AdjustmentReason>
    <AdjustmentAmount>1000000.00</AdjustmentAmount>
    <ReconciliationDate>2020-09-10T13:55:22</ReconciliationDate>
    <ReconciliationSummary>vyuergviwfvwiuevuiwvfiubbegwe</ReconciliationSummary>
    <ReconciledAmount>200000</ReconciledAmount>
    <OfferAccepted>N</OfferAccepted>
    <Claimants>
      <Claimant>
        <ClaimantCategory>2</ClaimantCategory>
        <ClaimantType>1</ClaimantType>
        <ClaimantIdNumber>24241241</ClaimantIdNumber>
        <ClaimantIdType>1</ClaimantIdType>
      </Claimant>
      <Claimant>
        <ClaimantCategory>2</ClaimantCategory>
        <ClaimantType>2</ClaimantType>
        <ClaimantIdNumber>3452525235525</ClaimantIdNumber>
        <ClaimantIdType>3</ClaimantIdType>
      </Claimant>
    </Claimants>
  </DischargeVoucherDtl>
</DischargeVoucherReq>
<MsgSignature>figuiiojwjfuuehgrhgherheihfegheheiofwhefioewiofhiwhfiowhfi</MsgSig
nature>
</TiraMsg>

```

Tag Name	Data Type	Condition	Tag Definition
DischargeVoucherReq: Discharge voucher data submission request sub root element			
DischargeVoucherHdr: Discharge voucher data header details sub root element			
RequestId	String(50)	Mandatory	Unique identification assigned by insurer for each request
CompanyCode	String(6)	Mandatory	TIRA assigned identification for the System owner submitting data to TIRAMIS
SystemCode	String(12)	Mandatory	System identification assigned by TIRA to

			the system submitting data
CallBackUrl	String(250)	Mandatory	A callback URL for asynchronous processing in order to be notified on the final response of the request
InsurerCompanyCode	String(6)	Mandatory	Insurer code to be given by TIRA
DischargeVoucherDtl: Discharge voucher details Sub root element			
DischargeVoucherNumber	String(50)	Mandatory	Discharge voucher number
ClaimAssessmentNumber	String(50)	Mandatory	Claim assessment number
ClaimReferenceNumber	String(50)	Mandatory	Claim reference number
CoverNoteReferenceNumber	String(50)	Mandatory	Cover Note reference number
DischargeVoucherDate	DateTime	Mandatory	Discharge voucher date
CurrencyCode	String(3)	Mandatory	ISO 4217 currency code
ExchangeRate	Numeric(36,2)	Mandatory	Exchange rate
ClaimOfferCommunicationDate	DateTime	Mandatory	Claim offer communication date and time as per YYYY-MM-DD'T'HH:MM:SS eng (2022-08-29T23:59:59) format
ClaimOfferAmount	Numeric(36,2)	Mandatory	Claim offer amount
ClaimantResponseDate	DateTime	Mandatory	Claim response date and time as per YYYY-MM-DD'T'HH:MM:SS eng (2022-08-29T23:59:59) format

AdjustmentDate	DateTime	Mandatory	Adjustment date and time as per YYYY-MM-DD'T'HH:MM:SS eng (2022-08-29T23:59:59) format
AdjustmentReason	String(1000)	Mandatory	Adjustment reason
AdjustmentAmount	Numeric(36,2)	Mandatory	Adjustment amount
ReconciliationDate	DateTime	Mandatory	Reconciliation date and time as per YYYY-MM-DD'T'HH:MM:SS eng (2022-08-29T23:59:59) format
ReconciliationSummary	String(1000)	Mandatory	Reconciliation summary
ReconciledAmount	Numeric(36,2)	Mandatory	Reconciled amount
OfferAccepted	String(1)	Mandatory	If the offer was accepted: Y – Yes N – No
Claimants:- Claimants details Sub root element			
Claimant:- Claimant details Sub root element			
ClaimantCategory	Number(1)	Mandatory/Optional	Claimant category: 1. Policyholder 2. Third Party
ClaimantType	Number(1)	Mandatory/Optional	Claimant type: 1. Individual 2. Corporate
ClaimantIdNumber	String(50)	Mandatory/Optional	Claimant Identification Number
ClaimantIdType	Number(1)	Mandatory/Optional	Claimant Identification type: 1. National Identification Number (NIN)

			2. Voters registration number 3. Passport number
--	--	--	---

15.2 Discharge Voucher Data Submission Request Acknowledgement – *DischargeVoucherReqAck*

```

<TiraMsg>
  <DischargeVoucherReqAck>
    <AcknowledgementId>TIRA22424232355</AcknowledgementId>
    <RequestId>NIC22424232355</RequestId>
    <AcknowledgementStatusCode>TIRA003</AcknowledgementStatusCode>
    <AcknowledgementStatusDesc>Received</AcknowledgementStatusDesc>
  </DischargeVoucherReqAck >
  <MsgSignature>btrhrtigronoirengoienfionewif</MsgSignature>
</TiraMsg>

```

Tag	Data Type	Tag definition
DischargeVoucherReqAck		Discharge voucher data submission request acknowledgment Header Information
AcknowledgementId	String(50)	Discharge voucher data submission Request acknowledgment ID assigned by TIRA on a respective request from Insurer system
RequestId	String(50)	Insurer Request ID
AcknowledgementStatusCode	String(7)	Acknowledgement status code
AcknowledgementStatusDesc	String(100)	Acknowledgement status description

15.3 Discharge voucher Data Submission Request Final Response – *DischargeVoucherRes*

```

<TiraMsg>
  <DischargeVoucherRes>
    <ResponseId>TIRA22424232355</ResponseId>
    <RequestId>NIC22424232355</RequestId>
    <ResponseStatusCode>TIRA001</ResponseStatusCode>
    <ResponseStatusDesc>Successful</ResponseStatusDesc>
  </DischargeVouchertRes>
  <MsgSignature>btrhrtigronoirengoienfionewif</MsgSignature>
</TiraMsg>

```

Tag	Data Type	Condition	Tag definition
DischargeVoucherRes			Discharge voucher data submission request final response header information
ResponseId	String(50)	Mandatory	TIRAMIS response ID
RequestId	String(50)	Mandatory	Insurer request ID
ResponseStatusCode	String(7)		Response status code
ResponseStatusDesc	String(100)		Response status description

15.4 Discharge voucher Data Submission Request Final Response Acknowledgement - *DischargeVoucherResAck*

```

<TiraMsg>
  <DischargeVoucherResAck>
    <AcknowledgementId>NIC22424232355</AcknowledgementId>
    <ResponseId>TIRA22424232355</ResponseId>
    <AcknowledgementStatusCode>TIRA001</AcknowledgementStatusCode>
    <AcknowledgementStatusDesc>Successful</AcknowledgementStatusDesc>
  </DischargeVoucherResAck>
  <MsgSignature>btrhrtigronoirengoienfionewif</MsgSignature>
</TiraMsg>

```

Tag	Data Type	Tag definition
DischargeVoucherResAck		Discharge voucher data submission request response acknowledgment Header Information
AcknowledgementId	String(50)	Discharge voucher data submission Response acknowledgement ID assigned by INSURER on a respective response from TIRAMIS system
ResponseId	String(50)	TIRAMIS Response ID
AcknowledgementStatusCode	String(7)	Acknowledgement status code
AcknowledgementStatusDesc	String(100)	Acknowledgement status description

16. CLAIM PAYMENT DATA SUBMISSION

16.1 Claim Payment Submission Request – *ClaimPaymentReq*

```

<TiraMsg>
  <ClaimPaymentReq>

```

```

    <ClaimPaymentHdr>
      <RequestId>AB3232532523344</RequestId>
      <CompanyCode>IC100</CompanyCode>
      <SystemCode>SYS001</SystemCode>
    </ClaimPaymentHdr>
  <CallBackUrl>http://nic.co.tz/api/CoverNoteref/response</CallBackUrl>
  <InsurerCompanyCode>IC100</InsurerCompanyCode>
</ClaimPaymentHdr>
<ClaimPaymentDtl>
  <ClaimPaymentNumber>322WQ25234234</ClaimPaymentNumber>
  <ClaimReferenceNumber>10020-25400-07720</ClaimReferenceNumber>
  <CoverNoteReferenceNumber>10020-25400-
07720</CoverNoteReferenceNumber>
  <PaymentDate>2020-09-10T13:55:22</PaymentDate>
  <PaidAmount>20000</PaidAmount>
  <PaymentMode>1</PaymentMode>
  <PartiesNotified>Y</PartiesNotified>
  <NetPremiumEarned>200</NetPremiumEarned>
  <ClaimResultedLitigation>Y</ClaimResultedLitigation>
  <LitigationReason>gegewgwgwifubweufgweiyfgwiguwf</LitigationReason>
  <CurrencyCode>USD</CurrencyCode>
  <ExchangeRate>2000.00</ExchangeRate>
  <Claimants>
    <Claimant>
      <ClaimantCategory>2</ClaimantCategory>
      <ClaimantType>1</ClaimantType>
      <ClaimantIdNumber>24241241</ClaimantIdNumber>
      <ClaimantIdType>1</ClaimantIdType>
    </Claimant>
    <Claimant>
      <ClaimantCategory>2</ClaimantCategory>
      <ClaimantType>2</ClaimantType>
      <ClaimantIdNumber>3452525235525</ClaimantIdNumber>
      <ClaimantIdType>3</ClaimantIdType>
    </Claimant>
  </Claimants>
</ClaimPaymentDtl>
</ClaimPaymentReq>

<MsgSignature>figuiiojwjfuuehgrhgherheihfegheheiofwhefioewiofhiwhfiowhfi</MsgSig
nature>
</TiraMsg>

```

Tag Name	Data Type	Condition	Tag Definition
ClaimPaymentReq: Claim payment data submission request sub root element			
ClaimPaymentHdr: Claim payment data header details sub root element			
RequestId	String(50)	Mandatory	Unique identification assigned by insurer for each request
CompanyCode	String(6)	Mandatory	TIRA assigned identification for the System owner

			submitting data to TIRAMIS
SystemCode	String(12)	Mandatory	System identification assigned by TIRA to the system submitting data
CallBackUrl	String(250)	Mandatory	A callback URL for asynchronous processing in order to be notified on the final response of the request
InsurerCompanyCode	String(6)	Mandatory	Insurer code to be given by TIRA
ClaimPaymentDtl: Claim payment details Sub root element			
ClaimPaymentNumber	String(50)	Mandatory	Claim payment number
ClaimReferenceNumber	String(50)	Mandatory	Claim reference number
CoverNoteReferenceNumber	String(50)	Mandatory	Cover Note reference number
PaymentDate	DateTime	Mandatory	Payment date and time as per YYYY-MM-DD'T'HH:MM:SS eng (2022-08-29T23:59:59) format
PaidAmount	Numeric(36,2)	Mandatory	Paid amount
PaymentMode	String(1)	Mandatory	Payment mode: 1. Cash 2. Cheque 3. EFT
PartiesNotified	String(1)	Mandatory	If parties were notified: Y – Yes N - No
NetPremiumEarned	Numeric(36,2)	Mandatory	Net premium earned

ClaimResultedLitigation	String(1)	Mandatory	If claim resulted in litigation: Y – Yes N - No
LitigationReason	String(1000)	Mandatory	Litigation reason
CurrencyCode	String(3)	Mandatory	ISO 4217 currency code
ExchangeRate	Numeric(36,2)	Mandatory	Exchange rate
Claimants: Claimants details Sub root element			
Claimant: Claimant details Sub root element			
ClaimantCategory	Number(1)	Mandatory/Optional	Claimant category: 1. Policyholder 2. Third Party
ClaimantType	Number(1)	Mandatory/Optional	Claimant type: 1. Individual 2. Corporate
ClaimantIdNumber	String(50)	Mandatory/Optional	Claimant Identification Number
ClaimantIdType	Number(1)	Mandatory/Optional	Claimant Identification type: 1. National Identification Number (NIN) 2. Voters registration number 3. Passport number

16.2 Claim Payment Data Submission Request Acknowledgement – *ClaimPaymentReqAck*

```

<TiraMsg>
  <ClaimPaymentReqAck>
    <AcknowledgementId>TIRA22424232355</AcknowledgementId>
    <RequestId>NIC22424232355</RequestId>
    <AcknowledgementStatusCode>TIRA003</AcknowledgementStatusCode>
    <AcknowledgementStatusDesc>Received</AcknowledgementStatusDesc>
  </ClaimPaymentReqAck>
  <MsgSignature>btrhrtigrono irengoienfionewif</MsgSignature>
</TiraMsg>

```

Tag	Data Type	Tag definition
ClaimPaymentReqAck		Claim payment data submission request acknowledgment Header Information
AcknowledgementId	String(50)	Claim payment data submission Request acknowledgement ID assigned by TIRA on a respective request from Insurer system
RequestId	String(50)	Insurer Request ID
AcknowledgementStatusCode	String(7)	Acknowledgement status code
AcknowledgementStatusDesc	String(100)	Acknowledgement status description

16.3 Claim Payment Data Submission Request Final Response – *ClaimPaymentRes*

```

<TiraMsg>
  <ClaimPaymentRes>
    <ResponseId>TIRA22424232355</ResponseId>
    <RequestId>NIC22424232355</RequestId>
    <ResponseStatusCode>TIRA001</ResponseStatusCode>
    <ResponseStatusDesc>Successful</ResponseStatusDesc>
  </ClaimPaymentRes>
  <MsgSignature>btrhrtigronoirengoienfionewif</MsgSignature>
</TiraMsg>

```

Tag	Data Type	Condition	Tag definition
ClaimPaymentRes: Claim payment data submission request final response header information			
ResponseId	String(50)	Mandatory	TIRAMIS response ID
RequestId	String(50)	Mandatory	Insurer request ID
ResponseStatusCode	String(7)		Response status code
ResponseStatusDesc	String(100)		Response status description

16.4 Claim Payment Data Submission Request Final Response Acknowledgement - *ClaimPaymentResAck*

```

<TiraMsg>
  <ClaimPaymentResAck>
    <AcknowledgementId>NIC22424232355</AcknowledgementId>
    <ResponseId>TIRA22424232355</ResponseId>
    <AcknowledgementStatusCode>TIRA001</AcknowledgementStatusCode>

```

```

    <AcknowledgementStatusDesc>Successful</AcknowledgementStatusDesc>
  </ClaimPaymentResAck>
  <MsgSignature>btrhrtigrono irengoienfionewif</MsgSignature>
</TiraMsg>

```

Tag	Data Type	Tag definition
ClaimPaymentResAck		Claim payment data submission request response acknowledgment Header Information
AcknowledgementId	String(50)	Claim payment data submission Response acknowledgement ID assigned by INSURER on a respective response from TIRAMIS system
ResponseId	String(50)	TIRAMIS Response ID
AcknowledgementStatusCode	String(7)	Acknowledgement status code
AcknowledgementStatusDesc	String(100)	Acknowledgement status description

17. CLAIM REJECTION DATA SUBMISSION

17.1 Claim Rejection Submission Request – *ClaimRejectionReq*

```

<TiraMsg>
  <ClaimRejectionReq>
    <ClaimRejectionHdr>
      <RequestId>AB3232532523344</RequestId>
      <CompanyCode>IC100</CompanyCode>
      <SystemCode>SYS001</SystemCode>
      <CallBackUrl>http://nic.co.tz/api/CoverNoteref/response</CallBackUrl>
      <InsurerCompanyCode>IC100</InsurerCompanyCode>
    </ClaimRejectionHdr>
    <ClaimRejectionDtl>
      <ClaimRejectionNumber>322WQ25234234</ClaimRejectionNumber>
      <ClaimReferenceNumber>10020-25400-07720</ClaimReferenceNumber>
      <CoverNoteReferenceNumber>10020-25400-
07720</CoverNoteReferenceNumber>
      <RejectionDate>2020-09-10T13:55:22</RejectionDate>
    <RejectionReason>uvgyegrufgiufwiefiufwiefiuegfuewfiuehiubfeiuwf</RejectionReason>
      <ClaimResultedLitigation>Y</ClaimResultedLitigation>
      <ClaimAmount>20000</ClaimAmount>
      <CurrencyCode>USD</CurrencyCode>
      <ExchangeRate>2000.00</ExchangeRate>
    <Claimants>
      <Claimant>
        <ClaimantCategory>2</ClaimantCategory>
        <ClaimantType>1</ClaimantType>
        <ClaimantIdNumber>24241241</ClaimantIdNumber>
        <ClaimantIdType>1</ClaimantIdType>
      </Claimant>
      <Claimant>
        <ClaimantCategory>2</ClaimantCategory>
        <ClaimantType>2</ClaimantType>

```

```

    <ClaimantIdNumber>3452525235525</ClaimantIdNumber>
    <ClaimantIdType>3</ClaimantIdType>
  </Claimant>
</Claimants>
  </ClaimRejectionDt1>
</ClaimRejectionReq>
<MsgSignature>figuiiojwjfuuehgrhgherheihfegheheiofwhefioewiofhiwhfiowhfi</MsgSignature>
</TiraMsg>

```

Tag Name	Data Type	Condition	Tag Definition
ClaimRejectionReq: Claim rejection data submission request sub root element			
ClaimRejectionHdr: Claim rejection data header details sub root element			
RequestId	String(50)	Mandatory	Unique identification assigned by insurer for each request
CompanyCode	String(6)	Mandatory	TIRA assigned identification for the System owner submitting data to TIRAMIS
SystemCode	String(12)	Mandatory	System identification assigned by TIRA to the system submitting data
CallbackUrl	String(250)	Mandatory	A callback URL for asynchronous processing in order to be notified on the final response of the request
InsurerCompanyCode	String(6)	Mandatory	Insurer code to be given by TIRA
ClaimRejectionDt1: Claim rejection details Sub root element			
ClaimRejectionNumber	String(50)	Mandatory	Claim rejection number
ClaimReferenceNumber	String(50)	Mandatory	Claim reference number
CoverNoteReferenceNumber	String(50)	Mandatory	Cover Note reference number
RejectionDate	DateTime	Mandatory	Rejection date and time as per YYYY-

			MM-DD'T'HH:MM:SS eng (2022-08-29T23:59:59) format
RejectionReason	String(100)	Mandatory	Rejection reason
ClaimResultedLitigation	String(1)	Mandatory	If claim resulted in litigation: Y – Yes N - No
ClaimAmount	Numeric(36,2)	Mandatory	Claim amount
CurrencyCode	String(3)	Mandatory	ISO 4217 currency code
ExchangeRate	Numeric(36,2)	Mandatory	Exchange rate
Claimants: Claimants details Sub root element			
Claimant: Claimant details Sub root element			
ClaimantCategory	Number(1)	Mandatory/Optional	Claimant category: 1. Policyholder 2. Third Party
ClaimantType	Number(1)	Mandatory/Optional	Claimant type: 1. Individual 2. Corporate
ClaimantIdNumber	String(50)	Mandatory/Optional	Claimant Identification Number
ClaimantIdType	Number(1)	Mandatory/Optional	Claimant Identification type: 1. National Identification Number (NIN) 2. Voters registration number 3. Passport number

17.2 Claim Rejection Data Submission Request Acknowledgement – *ClaimRejectionReqAck*

<TiraMsg>

```

<ClaimRejectionReqAck>
  <AcknowledgementId>TIRA22424232355</AcknowledgementId>
  <RequestId>NIC22424232355</RequestId>
  <AcknowledgementStatusCode>TIRA003</AcknowledgementStatusCode>
  <AcknowledgementStatusDesc>Received</AcknowledgementStatusDesc>
</ClaimRejectionReqAck>
<MsgSignature>btrhrtigronoirengoienfionewif</MsgSignature>
</TiraMsg>

```

Tag	Data Type	Tag definition
ClaimRejectionReqAck		Claim rejection data submission request acknowledgment Header Information
AcknowledgementId	String(50)	Claim rejection data submission Request acknowledgement ID assigned by TIRA on a respective request from Insurer system
RequestId	String(50)	Insurer Request ID
AcknowledgementStatusCode	String(7)	Acknowledgement status code
AcknowledgementStatusDesc	String(100)	Acknowledgement status description

17.3 Claim Rejection Data Submission Request Final Response – *ClaimRejectionRes*

```

<TiraMsg>
  <ClaimRejectionRes>
    <ResponseId>TIRA22424232355</ResponseId>
    <RequestId>NIC22424232355</RequestId>
    <ResponseStatusCode>TIRA001</ResponseStatusCode>
    <ResponseStatusDesc>Successful</ResponseStatusDesc>
  </ClaimRejectionRes>
  <MsgSignature>btrhrtigronoirengoienfionewif</MsgSignature>
</TiraMsg>

```

Tag	Data Type	Condition	Tag definition
ClaimRejectionRes			Claim rejection data submission request final response header information
ResponseId	String(50)	Mandatory	TIRAMIS response ID
RequestId	String(50)	Mandatory	Insurer request ID
ResponseStatusCode	String(7)		Response status code
ResponseStatusDesc	String(100)		Response status description

17.4 Claim Rejection Data Submission Request Final Response Acknowledgement - *ClaimRejectionResAck*

```

<TiraMsg>
  <ClaimRejectionResAck>
    <AcknowledgementId>NIC22424232355</AcknowledgementId>
    <ResponseId>TIRA22424232355</ResponseId>
    <AcknowledgementStatusCode>TIRA001</AcknowledgementStatusCode>
    <AcknowledgementStatusDesc>Successful</AcknowledgementStatusDesc>
  </ClaimRejectionResAck>
  <MsgSignature>btrhrtigrono irengo ienfionewif</MsgSignature>
</TiraMsg>

```

Tag	Data Type	Tag definition
ClaimRejectionResAck		Claim rejection data submission request response acknowledgment Header Information
AcknowledgementId	String(50)	Claim rejection data submission Response acknowledgement ID assigned by INSURER on a respective response from TIRAMIS system
ResponseId	String(50)	TIRAMIS Response ID
AcknowledgementStatusCode	String(7)	Acknowledgement status code
AcknowledgementStatusDesc	String(100)	Acknowledgement status description